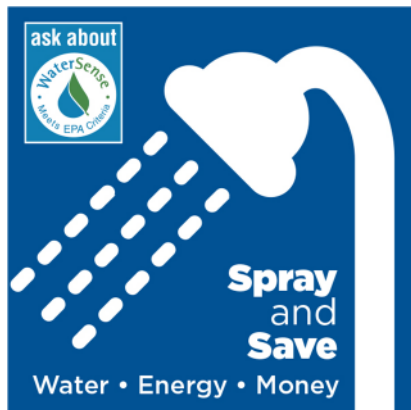


Water-Saving Tips



Spray and Save

- Showers use less water than baths. Choose a WaterSense labeled showerhead to replace your current model, and you'll save water and energy without noticing a change in flow!
- Switching to a WaterSense labeled showerhead will save enough electricity to power a 60-watt light bulb for nearly 7 hours with every shower.



Curb Outdoor Water Waste

- Avoid watering your lawn in the middle of the day when temperatures are highest.
- Consider installing a WaterSense labeled weather-based irrigation controller or WaterSense labeled spray sprinkler body if you have an in-ground watering system.
- Add native and drought-tolerant plants to your yard. These plants require little supplemental watering aside from rainfall. If you'd like to learn about native plants in our region, check out this list: <https://www.epa.gov/watersense/what-plant>.



Welcome to Water Savings!

Town of Huntington

<https://www.epa.gov/watersense>



What Is WaterSense?

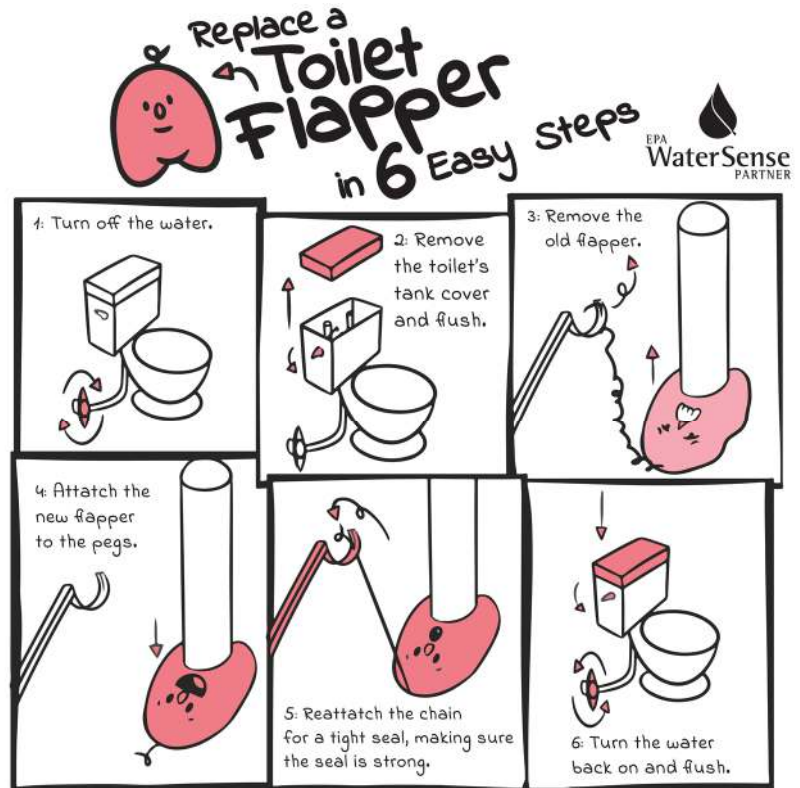
WaterSense is a partnership program sponsored by the U.S. Environmental Protection Agency (EPA). It is both a label for water-efficient products and a resource for water-saving tips. The WaterSense label is a simple way for consumers to identify water-efficient products, new homes, and landscape irrigation professionals. WaterSense labeled products use at least 20 percent less water and perform as well as or better than standard models. The Town of Huntington is a proud partner in the WaterSense Program! Visit www.epa.gov/watersense.



Water-Saving Tips

Find and Fix Leaks!

- **Check** for toilet leaks by placing a few drops of food coloring in the tank; wait 10 minutes before flushing. If dye shows up in your toilet bowl, you have a leak.
- **Twist** on a WaterSense labeled faucet aerator to save water without a noticeable difference in flow.
- **Replace** old and worn toilet flappers to stop leaks.



www.epa.gov/watersense



Save Water at Home

- Turn off the water while you brush teeth or shave.
- Only wash full loads of clothes or dishes.
- Install a WaterSense labeled showerhead to save water and energy while enjoying a satisfying spray.
- Thirsty for water-saving knowledge to share with children? Check out the WaterSense website for fun activities teachers and kids can use to learn more about how to save: <https://www.epa.gov/watersense/watersense-kids>