

## Ways you can help protect and preserve the Crab Meadow Watershed

*Everything we do on land affects our streams, ponds and bays. When water runs off land it takes pollutants and debris with it, carrying them through storm water drain systems to the nearest body of water. There are some simple actions you can take to help prevent pollution to our waters:*

- 1. KNOW YOUR WATERSHED:** Having knowledge of a watershed's boundaries can help increase awareness and understanding of how our actions on land affect water quality.
- 2. HAZARDOUS WASTE:** Do not pour toxic chemical or outdoor chemicals down drains. Take them to a collection center.
- 3. SEPTIC MAINTENANCE:** If you have a septic system, make sure it's properly maintained. It is important to have them pumped every 3-5 years to avoid polluting local ground water.
- 4. LAWN CARE:** Try using native, hardy plants or rain gardens that require little or no watering, fertilizers or pesticides. If you must fertilize, consider using organic or slow release, and try not to over apply. Always follow the label directions and never use before rain or watering the lawn, unless directed. Rain barrels are a great way to conserve rainwater on your property.
- 5. TREE MAINTENANCE:** Wooded areas help moderate local temperatures, reduce stormwater runoff, and improve water quality and wildlife habitats. Plant and preserve trees on your property, and along streams and streets.
- 5. DRIVE LESS:** Walk or bike to avoid pollutants from car exhaust or leaks.
- 6. CAR CARE:** Regularly check cars for leaks that may be harmful to wildlife. Dispose of hazardous wastes at a gas station or recycling center.
- 7. CAR WASH:** Take your car to a car wash that filters the wastewater or wash your car in a grassy area, rather than a paved surface. The soap will drain into the soil rather than the storm drains.
- 8. GIVE WATER A PLACE TO GO:** Use permeable materials like wood, brick or gravel for decks, patios, driveways and walkways to allow rain to soak in, rather than run off.
- 9. SCOOP UP POOP:** Animal waste contains harmful bacteria. Pick up after your pets to keep rainwater from carrying it to our waters.
- 10. TAKE ACTION:** Organize a clean-up to help educate others about Watershed Maintenance!  
**email: [crabmeadowwatershed@huntingtonny.gov](mailto:crabmeadowwatershed@huntingtonny.gov)**



## Recreational Opportunities

### Beaches

Crab Meadow Beach\*, Waterside Ave. (T)  
Swimming, Picnic Area, Volleyball, Walking Trails & Boardwalk, Kayak Launch, Restaurant, Playground, Basketball  
Geisslers Beach, Makamah Rd. (T)  
Fishing, No Lifeguard Supervision

### Parks and Preserves

Fuchs Pond Preserve\*, Waterside Ave. (T & SC)  
Walking Trails  
Jerome A. Ambro Memorial Wetland Preserve, Makamah Rd. (T)  
Walking Trails  
Henry Ingraham Nature Preserve\*, Waterside Ave. (T & SC)  
Walking Trails  
Makamah Nature Preserve\*, Fort Salonga Rd. (SC)  
Walking Trails  
Knolls & Veterans Parks\*, Bellerose Ave. (T & SC)  
Skate Park, Basketball, Little League Fields, Handball, Multiuse Synthetic Turf fields, Boundless Playground, Jogging Track  
Meadowlark Park\*, Middleville Rd. (T)  
Mountain Bike, Walking and Equestrian Trails

### Golf Courses

Indian Hills Country Club, Breeze Hill Rd.  
Privately operated.  
Crab Meadow Golf Course, Waterside Rd.  
Operated by the Town of Huntington.  
Northport Golf Course @ V.A. Medical Center, Middleville Rd.  
Public course, operated by American Legion Post 694

### Children's Summer Camp Programs

Camp Soundview, Crab Meadow Beach, Waterside Ave. \*\*  
Operated by the Town of Huntington  
Sea Stars Marine Camp, Fuch's Pond Preserve,  
Entrance on Norwood Rd.  
Operated by Cornell Cooperative Extension of Suffolk County

*\*Visit the Town of Huntington Trails Guide for more information on these select parks at <http://huntingtonny.gov/trails-guide>*

*\*\*Contact [parksandrec@huntingtonny.gov](mailto:parksandrec@huntingtonny.gov)*

(T)=Town of Huntington Property (SC)=Suffolk County Property



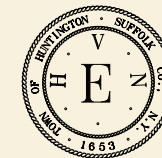
## Crab Meadow Watershed

*Preserve, Protect and Enjoy!*



*Visit us online at*

*[www.Crabmeadowwatershed.org](http://www.Crabmeadowwatershed.org)*



**Frank P. Petrone, Supervisor**

Mark Cuthbertson Councilman    Susan A. Berland Councilwoman    Eugene Cook Councilman    Tracey A. Edwards Councilwoman

## Dynamic Hydrological Processes shaping the Watershed



Shaped by a combination of natural and human influences, the Crab Meadow Watershed is a dynamic system that is constantly changing.

The salt marshes of the Crab Meadow Watershed play an important role as filters and

receptor areas. Stands of dense vegetation are essential to the stability of the coastline in trapping and binding sediments. They provide coastal protection from damaging intertidal influences as well as filtration of harmful contaminants from stormwater and human activity.

An anticipated rise in sea level could potentially impact many of the watershed's environments, particularly those along the shore, changing the shape of the coastline, and moving the fresh-salt water interfaces landward.

Run-off from storms and human activity are common causes of erosion within the watershed as well. Run-off loosens sediment, transporting and depositing it

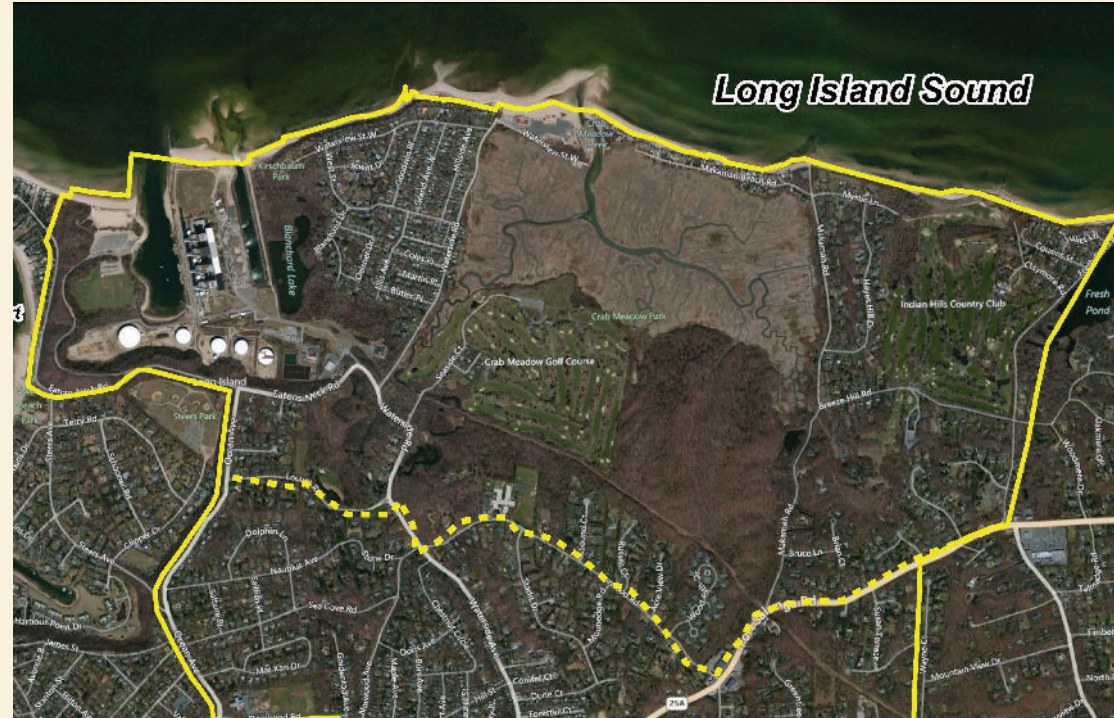


further downstream and changes aquatic habitats. Erosion and sedimentation influence the flow of the channels linking the upland and coastal zones and manipulate the topography of an area, subsequently influencing the drainage basin.

The slope and shape of a drainage basin can have a tremendous effect on the way stormwater runoff moves through a watershed as well. Areas with a steeper slope will see elevated rates of flow, as will areas of heavy compaction and increased development due to a reduction in permeable surfaces for water to penetrate.

## Welcome to the Crab Meadow Watershed

The Crab Meadow Watershed encompasses an area of approximately 3,560 square acres of land that drains directly to Crab Meadow Beach and the surrounding salt marshes and intertidal beaches, subsequently draining into the Long Island Sound.



\*The above map shows the primary watershed boundaries. For the overall watershed boundaries please refer to the map found on the website.

**Within the Crab Meadow Watershed there exists a collection of diverse habitats and wildlife that depend on its natural resources for food, water and shelter. People value a watershed as an economic, ecological and recreational resource. It is important to understand the hydrological processes that are continually shaping the Crab Meadow Watershed, along with the potential impacts from the actions of those who live, work and recreate within its boundaries, and the results those actions can have on the health of the Watershed.**



<http://huntingtonny.gov/crab-meadow-watershed>

## Wildlife and Habitats



The Crab Meadowwatershed includes several ecological habitats. The predominant habitats include Deciduous Forest, Coastal Plain Stream, Tidal Creeks, Salt Marsh, Sandy Beach and Freshwater/Brackish Ponds.



The sections of hardwood forest, composed of oaks (white, black, scarlet), pines, birches and maple provide shelter and food for woodpeckers, a variety of songbirds, owls, red tail hawk, whitetail deer, raccoons, opossum, squirrels and chipmunks. The nuts that drop from the trees provide forage for many species, sustaining them through the winter.

A few small freshwater and brackish ponds exist within the watershed providing habit and food for many species of animals including egrets, river otters, herons, frogs (leopard, green), turtles (box, painted), snakes (ribbon, garter), toads, and freshwater fish (trout, bass, etc.)

Crab Meadow Beach and it's surrounding salt marsh and estuaries are important habitat for osprey, diamond-back terrapin, migrating/over-wintering waterfowl and shorebirds and a variety of local marine invertebrates and fish. Estuaries provide a nursery for many saltwater fish and shellfish. Crab Meadow Beach has been observed as a significant ecological spawning area for Horseshoe Crabs.



**Preserve, Protect  
& Enjoy!**