

Appendix R-2
**Phase IB Archaeological Survey for the proposed Indian Hills
Development at the Indian Hills Golf Course**

Tracker Archaeology, Inc.
October 2018

Phase IB Archaeological Addendum Survey for the proposed Indian Hills Development
At the Indian Hills Golf Course
Northport, Town of Huntington, Suffolk County, New York

October 2018

Prepared for:
Nelson, Pope & Voorhis, LLC., Melville, New York

Alfred G. Cammisa, M.A.
with Alexander Padilla (CAD)

MANAGEMENT SUMMARY

PR#:

17PR00525

Involved agencies:

Town of Huntington

NYDEC

NYDOT

Phase:

Phase IB

Location:

Northport

Town of Huntington

Suffolk County

Survey Area:

Length: up to about 3300 feet (1012m) north-south

Width: up to about 1700 ft (1700) east-west

Acres Surveyed: about 32 acres (213h) inclusive with sand traps, tee mounds, fairways, & steep slopes

USGS:

Northport, NY

Survey overview:

ST no. & interval: 397 at 50 ft (15m), plus 96 radials at 1m & 3m (3 & 10ft)

Size of freshly plowed area: na

Surface survey transect interval: na

Results:

3 small prehistoric sites (artifact concentrations) labeled as Indian Hills A, B, & C plus scattered isolated finds

No historic remains

Historic/Archaeological structures/districts/sites:

No. Of buildings/structures/cemeteries in project area: 2 residential, numerous golfing course related features (tees, fairways, sand traps, paved walkways)

No. Of buildings/structures/cemeteries/archaeological sites adjacent to project area: 3 prehistoric -likely all the same (Indian Hill 1, unknown?, & Indian Hill 2)

No. Of previously determined NR listed or eligible buildings/structures/cemeteries/districts: none

No. Of identified eligible buildings/structures/cemeteries/districts: none

Authors:

Alfred G. Cammisa, M.A.

Alexander Padilla, B.A. (CAD)

Date of Report:

Report completed October, 2018

TABLE OF CONTENTS

Introduction.....	1
Field Methods.....	1
Field Results.....	1-2
Conclusions and Recommendations.....	3
Bibliography.....	3
Appendix 1: Figures and Photographs	
Appendix 2: Shovel Tests	

LIST OF FIGURES

Figure 1	Northport, New York USGS
Figure 2	Location of the shovel tests on the project area
Figure 3	Artifact Density and Distribution

LIST OF PHOTOS

Photo 1	Looking south from near ST 43 toward Breeze Hill Road
Photo 2	Looking south from near ST 167
Photo 3	Looking from near ST 190
Photo 4	Looking from near ST 293
Photo 5	Top row, left to right: ST 139-Scraper, ST 230-Core, ST 279S1m-Spokeshave Bottom row, left to right: ST279S3m-Shredder, ST279W3m-Knife/Scraper w/cortex striking platform All quartz or quartzite material

INTRODUCTION

Between September 11 and 19, 2018, TRACKER Archaeology, Inc. conducted a Phase IB addendum archaeological survey for the Indian Hills Development at the Indian Hills Golf Course Northport, Town of Huntington, Suffolk County, New York.

The purpose of the survey was to provide physical evidence for the presence or absence of archaeological sites on the project area. In 2015 (Cammisa with Padilla), a Phase IA and IB was conducted on about 15 acres in 3 separate areas on the golf course. A prehistoric site was encountered at 1 area in the northwest corner of the 2015 project area. Phase II intensive testing was then conducted. No further work had then been recommended. At that time, 240 shovel tests were conducted at 50 foot intervals. An additional 84 shovel tests were excavated at 25 and 12.5 foot intervals and 1 meter intervals. The current addendum investigation is in response to the extended project area (extended development).

The current project area is about 32 acres in size including greens (tees & fairways), sand traps, steep slopes, and paved walking paths, etc. A portion of the project area also lies within a previously recorded prehistoric site and adjacent to 2 other prehistoric sites on either side, to east & west. The 3 prehistoric sites are most likely related (see Cammisa 2015).

The work was performed by TRACKER Archaeology, Inc. of Monroe, New York. Field work was conducted by the P.I., Alfred G. Cammisa, M.A., field director, Alexander D'Amico, M.S. crew chief, Samantha Serfontein, M.A., and field technicians, Alfred T. Cammisa, and Dan Cartwright. Report preparation by Alfred G. Cammisa with Alexander Padilla, B.A. (CAD).

The work was performed for Nelson, Pope & Voorhis, LLC., Melville, New York.

FIELD METHODS

Walkover

Any exposed ground surfaces were walked over at about 3 to 5 meter intervals to observe for artifacts. Covered ground terrain was reconnoitered at approximately 15 meter intervals to observe for any above ground features, such as berms, depressions, or rock configurations which might be evidence for historic or prehistoric features. Photographs were taken of the property.

Shovel Testing

Shovel tests (ST's) were initially excavated at approximately 15 meter intervals across the project area. Each ST measured about 30 to 40 cm. in diameter and was dug into the underlying subsoil (B horizon) 10 to 20 cm. when possible. Soils were screened through 1/4 inch wire mesh and observed for artifacts. Shovel tests were flagged in the field.

Soil stratigraphy was recorded according to texture and color. Soil color was matched against the Munsell color chart for soils. Notes were transcribed in a notebook.

FIELD RESULTS

Field testing of the project area included the initial excavation of 397 shovel tests. Vegetation consisted mostly a mowed golf lawn with some wooded areas, some of which was in steep slopes. Steep slopes around the previously known 3 prehistoric sites (see Cammisa 2015) were tested. Steep slopes further removed from the known prehistoric sites and the Long Island Sound were not shovel tested.

A scattering of prehistoric artifacts was encountered in 12 areas and a series of 8 additional radial shovel tests was conducted at 3 and 1 meters intervals around each of the initial "positive" ST's for a total of 96 additional ST's (see Figure 2).

Stratigraphy

General stratigraphy across the project area consisted of the following:

-A/O horizon - 1 to 10 cm. thick of root mat, leaf litter and humus. The thicker amounts were in the wooded areas.

-A horizon - 13 to 26 cm. thick of 10YR4/3 brown loamy sand

-B horizon - 10 to 20 cm. dug into of 10YR5/6 yellow brown loamy sand

Artifacts

SITE	ST	COUNT	TYPE	SITE	ST	COUNT	TYPE
	21	2	Flakes	C	279	4	Debitage
	21 3mN	1	Flake	C	279 1mE	3	Flakes
	68	1	Flake	C	279 1mN	4	Flakes
A	82	2	Flakes	C	279 1mS	6	Flakes, Spokeshave
A	82 1mE	4	Flakes	C	279 1mW	3	Flakes
A	82 1mN	4	Flakes	C	279 3mE	6	Flakes
A	82 1mS	11	Flakes	C	279 3mS	30	Flakes, Shredder
A	82 3mN	3	Flakes	C	279 3mW	2	Flake, Knife/ Scraper
A	82 3mS	1	Flake	C	279 3mN	2	Flakes
A	82 3mW	2	Flakes		336	1	Flake
	88	1	Flake				
	99	1	Flake				
	108	1	Flake				
B	116	1	Flake				
B	116 1mN	2	Flakes				
B	116 3mE	1	Flakes				
	133	1	Flake				
	139	1	Scraper				
	230	1	Core				

CONCLUSIONS AND RECOMMENDATIONS

The field testing included the initial excavation of 397 ST's. No historic sites were encountered. However, prehistoric artifacts were encountered across the project area. An additional 96 radial ST's were conducted at 1 & 3 meters around a scattering of 12 positive ST's. Many of the "positives" were limited to isolated finds. However, small prehistoric sites (artifact concentrations) were identified at 3 separate locations, labeled as Indian Hills A, B, & C. Two of the three sites (A & B) were located within, and adjacent to, 3 other previously known prehistoric sites (see Cammisa with Padilla 2015). *Indian Hills Site A is adjacent to the Indian Hills Site identified in 2015 (10304.001236) and may be related to that site.*

The purpose of the Phase I archaeological survey is to establish the presence or absence of archaeological sites. If the site is to be impacted by proposed construction or other activities, Phase II intensive testing of any archaeological site is then specified by the regulations of the New York State Historic Preservation Office and the National Advisory Council on Historic preservation. Phase II investigation methods should interpret the archaeological sites and determine if it is eligible for the nomination to State or National Registers of Historic Places.

If the prehistoric Indian Hills Site(s) can not be avoided during development then we would recommend Phase II intensive testing on the prehistoric sites prior to proposed impacts due to development related ground breaking or construction. Impacts could include proposed buildings, structures, grading, tree plantings, etc. Phase II investigations would interpret the site and supply information needed to make this determination and would include:

- 1) Site integrity, including the depth and extent of undisturbed soil horizons and the presence or absence of cultural features, and the degree of natural and/or human disturbances to those features.
- 2) Cultural components/affiliations and time range present.
- 3) Vertical and horizontal distribution of archaeological remains (spatial boundaries and stratigraphic levels).
- 4) Site interpretation, including any uniqueness/significance, in a local or regional context, must be demonstrated.

BIBLIOGRAPHY

Cammisa, Alfred G. with Alexander Padilla (CAD)
2015 *Phase I and Phase II Archaeological Investigations at the Indian Hills Prehistoric Site for the proposed Improvements to the Indian Hills Golf Course Northport, Township of Huntington, Suffolk County, New York.* Tracker Archaeology #835.

United States Geologic Survey
1967 Northport, New York quadrangles, 7.5 minute series (rev.1980).

APPENDIX 1

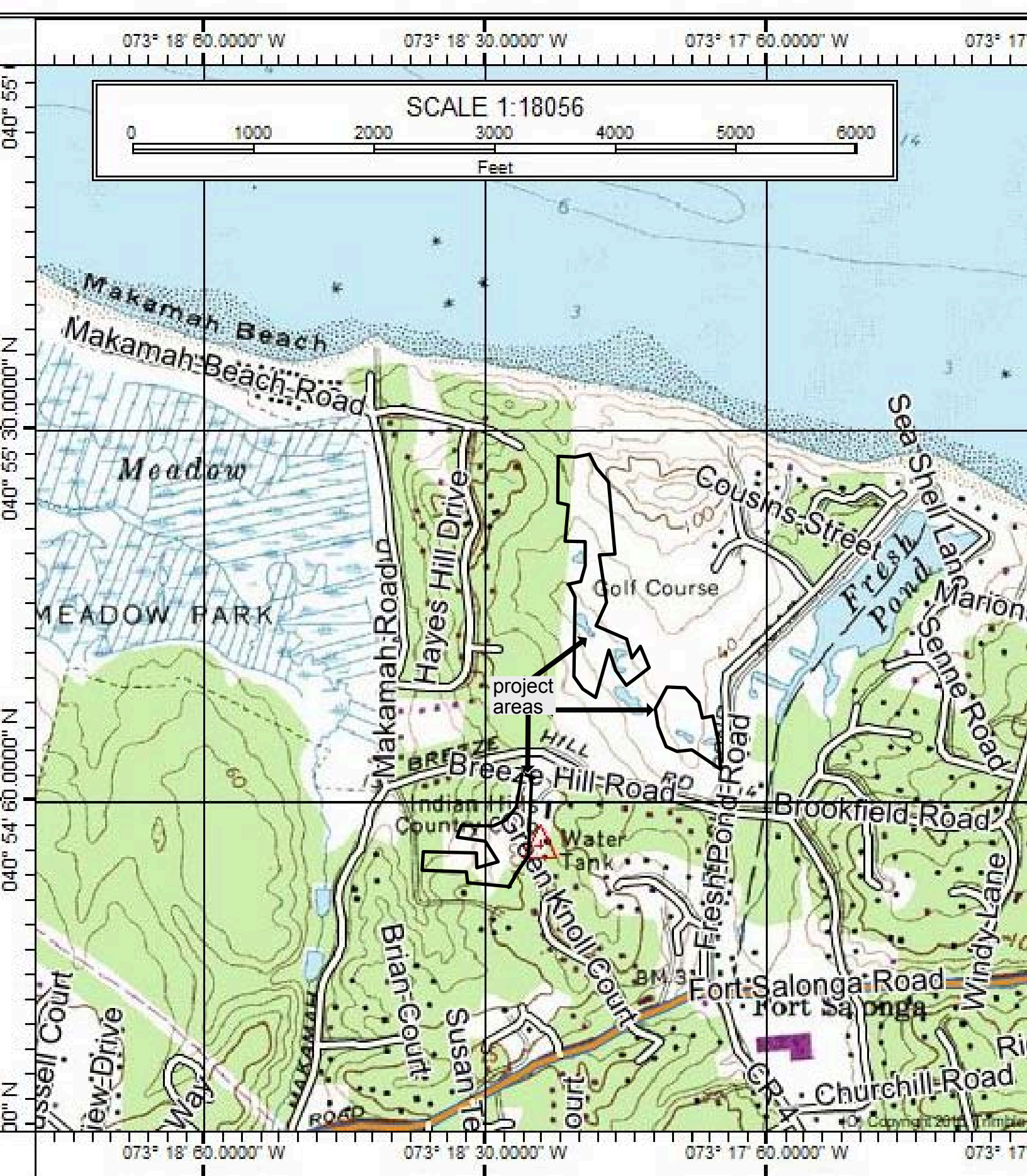


Figure 1 N
Northport, NY USGS ★

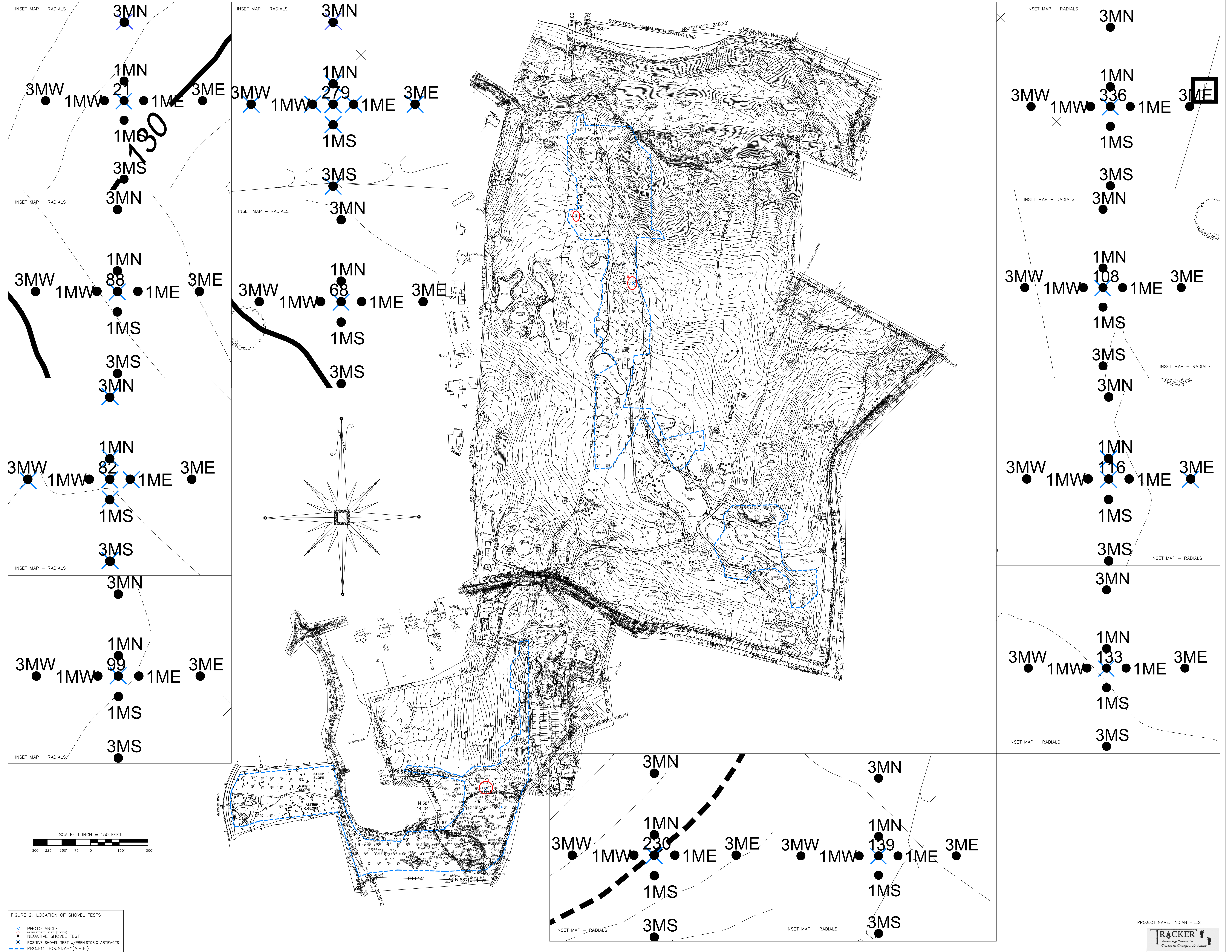
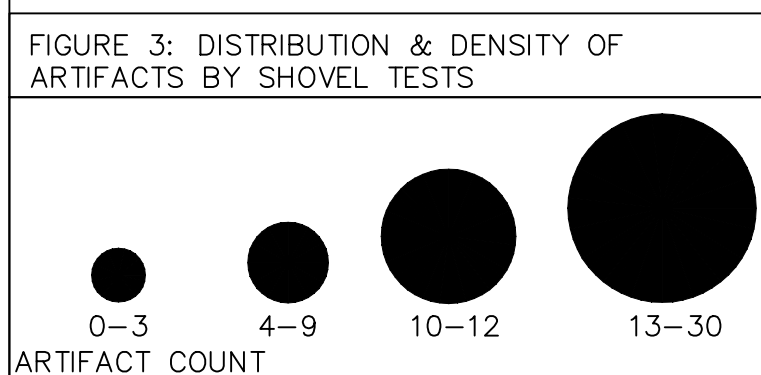
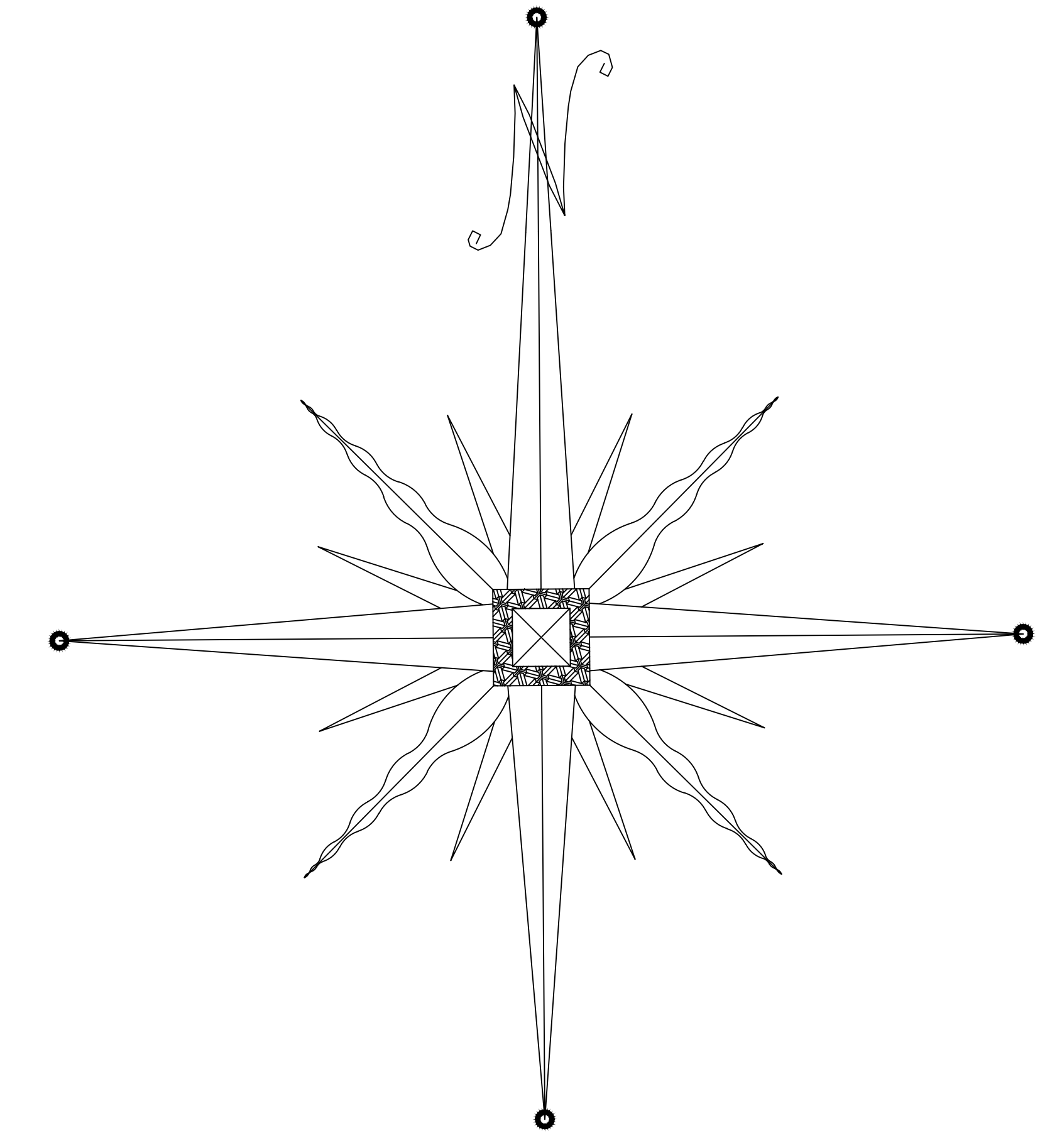
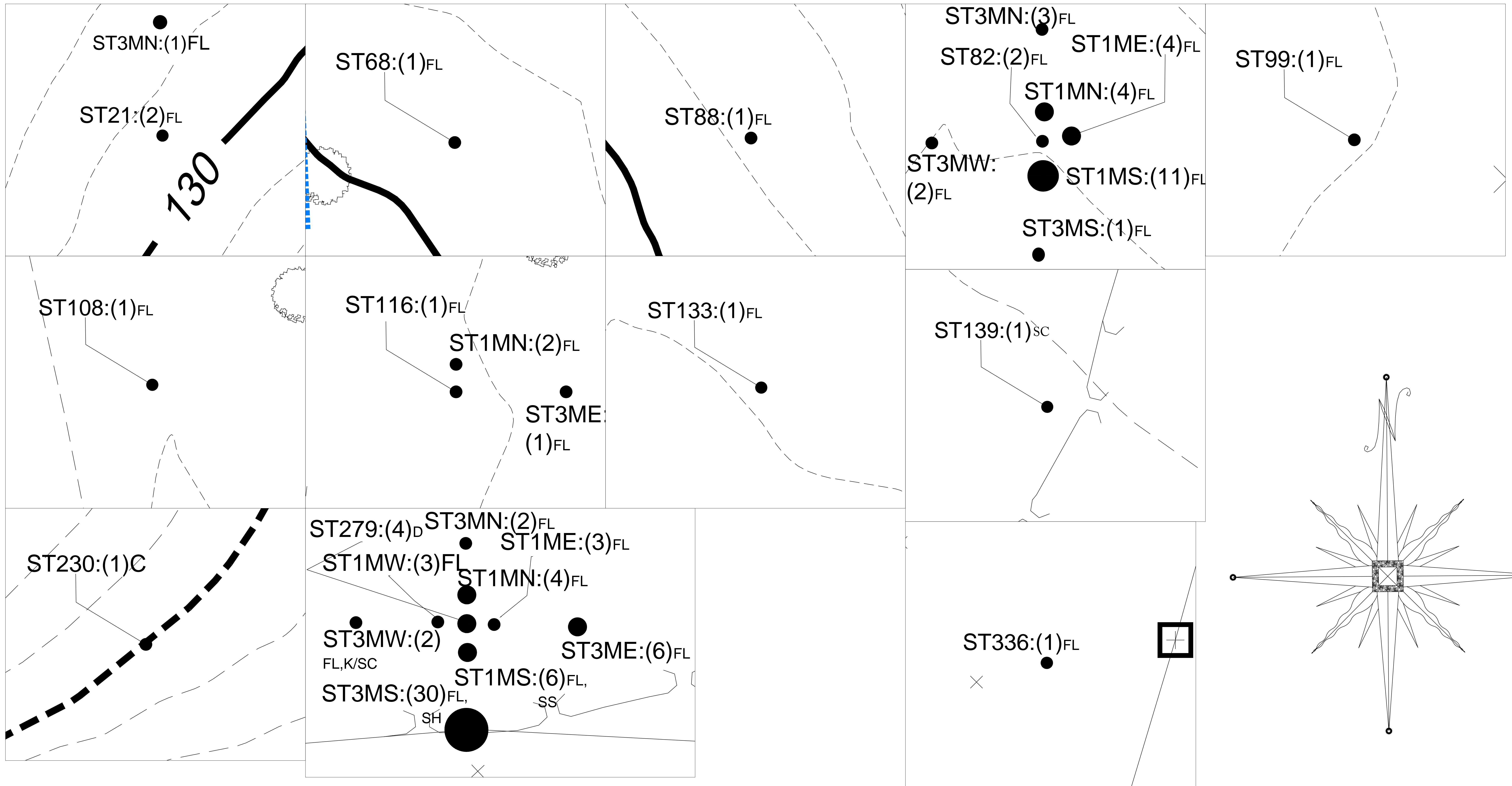


FIGURE 2: LOCATION OF SHOVEL TESTS

- V PHOTO ANGLE
- POSITIVE SHOVEL TEST
- NEGATIVE SHOVEL TEST
- X POSITIVE SHOVEL TEST w/PREHISTORIC ARTIFACTS
- PROJECT BOUNDARY (A.P.E.)



ARTIFACT LEGEND

FL = FLAKES	SC = SCRAPER
D = DEBITAGE	K = KNIFE
C = CORE	SH = SHREDDER
	SS = SPOKESHAVE

Photo 1

Looking south from near ST 43 toward Breeze Hill Rd.



Photo 2

Looking south from near ST 167



Photo 3
Looking from near ST 190



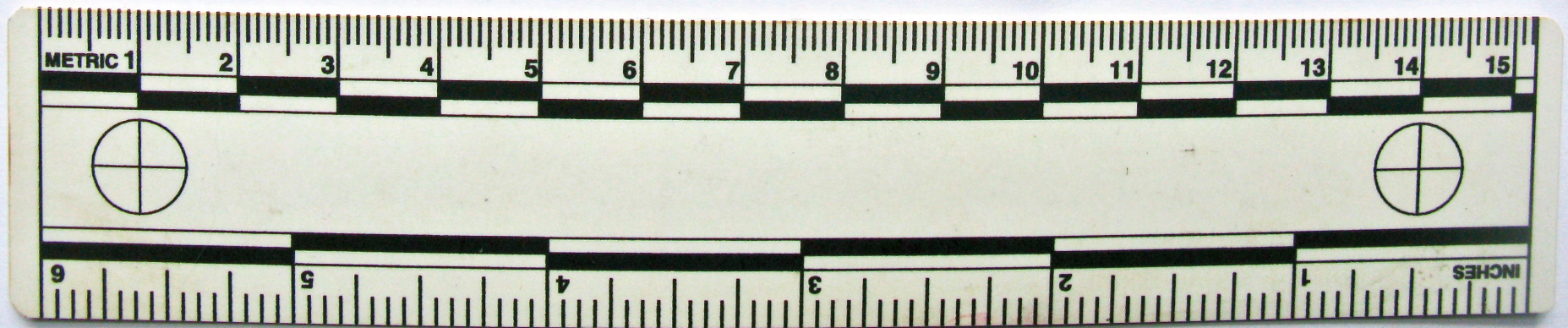
Photo 4

Looking from near ST 293





Top row, left to right: ST 139-Scraper, ST 230-Core, ST 279S1m, Spokeshave
Bottom row, left to right: ST 279S3m-Shredder, ST 279W3m-Knife/Scraper w/cortex striking platform
All quartz or quartzite material



APPENDIX 2

Shovel Tests

STP	LV	DEPTH(CM)	TEXTURE	COLOR	HOR	COMMENT
1	1	0-3	rootmat,leaves,humus		A/O	NCM
	2	3-21	LoSa	10YR4/3	A	NCM
	3	21-31	LoSa	10YR5/6	B	NCM
2	1	0-3	rootmat,leaves,humus		A/O	NCM
	2	3-23	LoSa	10YR4/3	A	NCM
	3	23-33	LoSa	10YR5/6	B	NCM
3	1	0-4	rootmat,leaves,humus		A/O	NCM
	2	4-25	LoSa	10YR4/3	A	NCM
	3	25-35	LoSa	10YR5/6	B	NCM
4	1	0-5	rootmat,leaves,humus		A/O	NCM
	2	5-24	LoSa	10YR4/3	A	coal
	3	24-39	LoSa	10YR5/6	B	NCM
5	1	0-4	rootmat,leaves,humus		A/O	NCM
	2	4-23	LoSa	10YR4/3	A	NCM
	3	23-325	LoSa	10YR5/6	B	NCM
6	1	0-6	rootmat,leaves,humus		A/O	NCM
	2	6-25	LoSa	10YR4/3	A	NCM
	3	25-37	LoSa	10YR5/6	B	NCM
7	1	0-4	rootmat,leaves,humus		A/O	NCM
	2	4-25	LoSa	10YR4/3	A	NCM
	3	25-35	LoSa	10YR5/6	B	NCM
8	1	0-3	rootmat,leaves,humus		A/O	NCM
	2	3-24	LoSa	10YR4/3	A	NCM
	3	24-35	LoSa	10YR5/6	B	NCM
9	1	0-4	rootmat,leaves,humus		A/O	NCM
	2	4-19	LoSa	10YR4/3	A	NCM
	3	19-30	LoSa	10YR5/6	B	NCM
10	1	0-3	rootmat,leaves,humus		A/O	NCM
	2	3-25	LoSa	10YR4/3	A	NCM
	3	25-35	LoSa	10YR5/6	B	NCM
11	1	0-5	rootmat,leaves,humus		A/O	NCM
	2	5-24	LoSa	10YR4/3	A	NCM
	3	24-34	LoSa	10YR5/6	B	NCM
12	1	0-5	rootmat,leaves,humus		A/O	NCM
	2	5-27	LoSa	10YR4/3	A	NCM
	3	27-37	LoSa	10YR5/6	B	NCM
13	1	0-3	rootmat,leaves,humus		A/O	NCM
	2	3-25	LoSa	10YR4/3	A	NCM
	3	25-36	LoSa	10YR5/6	B	NCM

14	1	0-3	rootmat,leaves,humus		A/O	NCM
	2	3-20	LoSa	10YR4/3	A	NCM
	3	20-30	LoSa	10YR5/6	B	NCM
15	1	0-3	rootmat,leaves,humus		A/O	NCM
	2	3-25	LoSa	10YR4/3	A	NCM
	3	25-35	LoSa	10YR5/6	B	NCM
16	1	0-5	rootmat,leaves,humus		A/O	NCM
	2	5-25	LoSa	10YR4/3	A	NCM
	3	25-35	LoSa	10YR5/6	B	NCM
17	1	0-6	rootmat,leaves,humus		A/O	NCM
	2	6-26	LoSa	10YR4/3	A	NCM
	3	26-40	LoSa	10YR5/6	B	NCM
18	1	0-8	rootmat,leaves,humus		A/O	NCM
	2	8-26	LoSa	10YR4/3	A	NCM
	3	26-38	LoSa	10YR5/6	B	NCM
19	1	0-7	rootmat,leaves,humus		A/O	NCM
	2	7-23	LoSa	10YR4/3	A	NCM
	3	23-33	LoSa	10YR5/6	B	NCM
20	1	0-6	rootmat,leaves,humus		A/O	NCM
	2	6-27	LoSa	10YR4/3	A	NCM
	3	27-35	LoSa	10YR5/6	B	NCM
21	1	0-8	rootmat,leaves,humus		A/O	NCM
	2	8-28	LoSa	10YR4/3	A	flakes
	3	28-40	LoSa	10YR5/6	B	NCM
21: 1mN	1	0-8	rootmat,leaves,humus		A/O	NCM
	2	8-28	LoSa	10YR4/3	A	NCM
	3	28-40	LoSa	10YR5/6	B	NCM
3mN	1	0-8	rootmat,leaves,humus		A/O	NCM
	2	8-27	LoSa	10YR4/3	A	flake
	3	27-40	LoSa	10YR5/6	B	NCM
1mS	1	0-9	rootmat,leaves,humus		A/O	NCM
	2	9-26	LoSa	10YR4/3	A	NCM
	3	26-36	LoSa	10YR5/6	B	NCM
3mS	1	0-7	rootmat,leaves,humus		A/O	NCM
	2	7-26	LoSa	10YR4/3	A	NCM
	3	26-36	LoSa	10YR5/6	B	NCM
1mE	1	0-10	rootmat,leaves,humus		A/O	NCM
	2	10-25	LoSa	10YR4/3	A	NCM
	3	25-35	LoSa	10YR5/6	B	NCM

3mE	1	0-8	rootmat,leaves,humus		A/O	NCM
	2	8-27	LoSa	10YR4/3	A	NCM
	3	27-38	LoSa	10YR5/6	B	NCM
1mW	1	0-8	rootmat,leaves,humus		A/O	NCM
	2	8-28	LoSa	10YR4/3	A	NCM
	3	28-40	LoSa	10YR5/6	B	NCM
3mW	1	0-8	rootmat,leaves,humus		A/O	NCM
	2	8-28	LoSa	10YR4/3	A	NCM
	3	28-40	LoSa	10YR5/6	B	NCM
22	1	0-7	rootmat,leaves,humus		A/O	NCM
	2	7-28	LoSa	10YR4/3	A	NCM
	3	28-38	LoSa	10YR5/6	B	NCM
23	1	0-5	rootmat,leaves,humus		A/O	NCM
	2	5-25	LoSa	10YR4/3	A	NCM
	3	25-35	LoSa	10YR5/6	B	NCM
24	1	0-3	rootmat,leaves,humus		A/O	NCM
	2	3-25	LoSa	10YR4/3	A	NCM
	3	25-35	LoSa	10YR5/6	B	NCM
25	1	0-3	rootmat,leaves,humus		A/O	NCM
	2	3-25	LoSa	10YR4/3	A	NCM
	3	25-35	LoSa	10YR5/6	B	NCM
26	1	0-3	rootmat,leaves,humus		A/O	NCM
	2	3-23	LoSa	10YR4/3	A	NCM
	3	23-35	LoSa	10YR5/6	B	NCM
27	1	0-5	rootmat,leaves,humus		A/O	NCM
	2	5-26	LoSa	10YR4/3	A	NCM
	3	26-37	LoSa	10YR5/6	B	NCM
28	1	0-5	rootmat,leaves,humus		A/O	NCM
	2	5-27	LoSa	10YR4/3	A	NCM
	3	27-37	LoSa	10YR5/6	B	NCM
29	1	0-2	rootmat,leaves,humus		A/O	NCM
	2	2-24	LoSa	10YR4/3	A	NCM
	3	24-34	LoSa	10YR5/6	B	NCM
30	1	0-2	rootmat,leaves,humus		A/O	NCM
	2	2-25	LoSa	10YR4/3	A	NCM
	3	25-35	LoSa	10YR5/6	B	NCM
31	1	0-3	rootmat,leaves,humus		A/O	NCM
	2	3-22	LoSa	10YR4/3	A	NCM
	3	22-32	LoSa	10YR5/6	B	NCM

32	1	0-3	rootmat,leaves,humus		A/O	NCM
	2	3-26	LoSa	10YR4/3	A	NCM
	3	26-37	LoSa	10YR5/6	B	NCM
33	1	0-5	rootmat,leaves,humus		A/O	NCM
	2	5-27	LoSa	10YR4/3	A	NCM
	3	27-40	LoSa	10YR5/6	B	NCM
34	1	0-6	rootmat,leaves,humus		A/O	NCM
	2	6-25	LoSa	10YR4/3	A	NCM
	3	25-35	LoSa	10YR5/6	B	NCM
35	1	0-6	rootmat,leaves,humus		A/O	NCM
	2	6-24	LoSa	10YR4/3	A	NCM
	3	36-36	LoSa	10YR5/6	B	NCM
36	1	0-7	rootmat,leaves,humus		A/O	NCM
	2	7-25	LoSa	10YR4/3	A	NCM
	3	25-36	LoSa	10YR5/6	B	NCM
37	1	0-8	rootmat,leaves,humus		A/O	NCM
	2	8-19	LoSa	10YR4/3	A	NCM
	3	19-impeded roots				
38	1	0-6	rootmat,leaves,humus		A/O	NCM
	2	6-25	LoSa	10YR4/3	A	NCM
	3	25-40	LoSa	10YR5/6	B	NCM
39	1	0-5	rootmat,leaves,humus		A/O	NCM
	2	5-28	LoSa	10YR4/3	A	NCM
	3	28-40	LoSa	10YR5/6	B	NCM
40	1	0-8	rootmat,leaves,humus		A/O	NCM
	2	8-27	LoSa	10YR4/3	A	NCM
	3	27-37	LoSa	10YR5/6	B	NCM
41	1	0-4	rootmat,leaves,humus		A/O	NCM
	2	4-26	LoSa	10YR4/3	A	NCM
	3	26-36	LoSa	10YR5/6	B	NCM
42	1	0-3	rootmat,leaves,humus		A/O	NCM
	2	3-26	LoSa	10YR4/3	A	NCM
	3	26-36	LoSa	10YR5/6	B	NCM
43	1	0-4	rootmat,leaves,humus		A/O	NCM
	2	4-25	LoSa	10YR4/3	A	NCM
	3	25-35	LoSa	10YR5/6	B	NCM
44	1	0-5	rootmat,leaves,humus		A/O	NCM
	2	5-27	LoSa	10YR4/3	A	NCM
	3	27-44	LoSa	10YR5/6	B	NCM

45	1	0-2	rootmat,leaves,humus		A/O	NCM
	2	2-26	LoSa	10YR4/3	A	NCM
	3	26-38	LoSa	10YR5/6	B	NCM
46	1	0-3	rootmat,leaves,humus		A/O	NCM
	2	3-26	LoSa	10YR4/3	A	NCM
	3	26-40	LoSa	10YR5/6	B	NCM
47	1	0-3	rootmat,leaves,humus		A/O	NCM
	2	3-23	LoSa	10YR4/3	A	NCM
	3	23-34	LoSa	10YR5/6	B	NCM
48	1	0-3	rootmat,leaves,humus		A/O	NCM
	2	3-25	LoSa	10YR4/3	A	NCM
	3	25-40	LoSa	10YR5/6	B	NCM
49	1	0-3	rootmat,leaves,humus		A/O	NCM
	2	3-28	LoSa	10YR4/3	A	NCM
	3	28-42	LoSa	10YR5/6	B	NCM
50	1	0-5	rootmat,leaves,humus		A/O	NCM
	2	5-26	LoSa	10YR4/3	A	NCM
	3	26-43	LoSa	10YR5/6	B	NCM
51	1	0-6	rootmat,leaves,humus		A/O	NCM
	2	6-20	LoSa	10YR4/3	A	NCM
	3	20-38	LoSa	10YR5/6	B	NCM
52	1	0-6	rootmat,leaves,humus		A/O	NCM
	2	6-22	LoSa	10YR4/3	A	NCM
	3	22-36	LoSa	10YR5/6	B	NCM
53	1	0-8	rootmat,leaves,humus		A/O	NCM
	2	8-23	LoSa	10YR4/3	A	NCM
	3	23-35	LoSa	10YR5/6	B	NCM
54	1	0-7	rootmat,leaves,humus		A/O	NCM
	2	7-23	LoSa	10YR4/3	A	NCM
	3	23-35	LoSa	10YR5/6	B	NCM
55	1	0-8	rootmat,leaves,humus		A/O	NCM
	2	8-26	LoSa	10YR4/3	A	NCM
	3	26-36	LoSa	10YR5/6	B	NCM
56	1	0-8	rootmat,leaves,humus		A/O	NCM
	2	8-25	LoSa	10YR4/3	A	NCM
	3	25-35	LoSa	10YR5/6	B	NCM
57	1	0-6	rootmat,leaves,humus		A/O	NCM
	2	6-28	LoSa	10YR4/3	A	NCM
	3	28-38	LoSa	10YR5/6	B	NCM

58	1	0-8	rootmat,leaves,humus		A/O	NCM
	2	8-28	LoSa	10YR4/3	A	NCM
	3	28-39	LoSa	10YR5/6	B	NCM
59	1	0-4	rootmat,leaves,humus		A/O	NCM
	2	4-25	LoSa	10YR4/3	A	NCM
	3	25-38	LoSa	10YR5/6	B	NCM
60	1	0-2	rootmat,leaves,humus		A/O	NCM
	2	2-23	LoSa	10YR4/3	A	NCM
	3	23-33	LoSa	10YR5/6	B	NCM
61	1	0-3	rootmat,leaves,humus		A/O	NCM
	2	3-24	LoSa	10YR4/3	A	NCM
	3	24-34	LoSa	10YR5/6	B	NCM
62	1	0-3	rootmat,leaves,humus		A/O	NCM
	2	3-24	LoSa	10YR4/3	A	NCM
	3	24-34	LoSa	10YR5/6	B	NCM
63	1	0-3	rootmat,leaves,humus		A/O	NCM
	2	3-19	LoSa	10YR4/3	A	NCM
	3	19-29	LoSa	10YR5/6	B	NCM
64	1	0-3	rootmat,leaves,humus		A/O	NCM
	2	3-25	LoSa	10YR4/3	A	NCM
	3	25-35	LoSa	10YR5/6	B	NCM
65	1	0-3	rootmat,leaves,humus		A/O	NCM
	2	3-25	LoSa	10YR4/3	A	NCM
	3	25-25	LoSa	10YR5/6	B	NCM
66	1	0-3	rootmat,leaves,humus		A/O	NCM
	2	3-24	LoSa	10YR4/3	A	NCM
	3	24-40	LoSa	10YR5/6	B	NCM
67	1	0-5	rootmat,leaves,humus		A/O	NCM
	2	7-26	LoSa	10YR4/3	A	NCM
	3	26-28	LoSa	10YR5/6	B	NCM
68	1	0-5	rootmat,leaves,humus		A/O	NCM
	2	5-25	LoSa	10YR4/3	A	flake
	3	25-35	LoSa	10YR5/6	B	NCM
68: 1mN	1	0-5	rootmat,leaves,humus		A/O	NCM
	2	5-25	LoSa	10YR4/3	A	NCM
	3	25-35	LoSa	10YR5/6	B	NCM
3mN	1	0-5	rootmat,leaves,humus		A/O	NCM
	2	5-25	LoSa	10YR4/3	A	NCM
	3	25-35	LoSa	10YR5/6	B	NCM

1mS	1	0-4	rootmat,leaves,humus		A/O	NCM
	2	4-26	LoSa	10YR4/3	A	NCM
	3	26-36	LoSa	10YR5/6	B	NCM
3mS	1	0-4	rootmat,leaves,humus		A/O	NCM
	2	4-24	LoSa	10YR4/3	A	NCM
	3	24-34	LoSa	10YR5/6	B	NCM
1mE	1	0-3	rootmat,leaves,humus		A/O	NCM
	2	3-25	LoSa	10YR4/3	A	NCM
	3	25-35	LoSa	10YR5/6	B	NCM
3mE	1	0-3	rootmat,leaves,humus		A/O	NCM
	2	3-24	LoSa	10YR4/3	A	NCM
	3	24-35	LoSa	10YR5/6	B	NCM
1mW	1	0-5	rootmat,leaves,humus		A/O	NCM
	2	5-27	LoSa	10YR4/3	A	NCM
	3	27-38	LoSa	10YR5/6	B	NCM
3mW	1	0-5	rootmat,leaves,humus		A/O	NCM
	2	5-27	LoSa	10YR4/3	A	NCM
	3	27-40	LoSa	10YR5/6	B	NCM
69	1	0-4	rootmat,leaves,humus		A/O	NCM
	2	4-25	LoSa	10YR4/3	A	NCM
	3	25-35	LoSa	10YR5/6	B	NCM
70	1	0-8	rootmat,leaves,humus		A/O	NCM
	2	8-25	LoSa	10YR4/3	A	NCM
	3	25-35	LoSa	10YR5/6	B	NCM
71	1	0-7	rootmat,leaves,humus		A/O	NCM
	2	7-25	LoSa	10YR4/3	A	NCM
	3	25-35	LoSa	10YR5/6	B	NCM
72	1	0-8	rootmat,leaves,humus		A/O	NCM
	2	8-23	LoSa	10YR4/3	A	NCM
	3	23-34	LoSa	10YR5/6	B	NCM
73	1	0-7	rootmat,leaves,humus		A/O	NCM
	2	7-24	LoSa	10YR4/3	A	NCM
	3	24-35	LoSa	10YR5/6	B	NCM
74	1	0-8	rootmat,leaves,humus		A/O	NCM
	2	8-25	LoSa	10YR4/3	A	NCM
	3	25-35	LoSa	10YR5/6	B	NCM
75	1	0-8	rootmat,leaves,humus		A/O	NCM
	2	8-27	LoSa	10YR4/3	A	NCM
	3	27-37	LoSa	10YR5/6	B	NCM

76	1	0-3	rootmat,leaves,humus		A/O	NCM
	2	3-23	LoSa	10YR4/3	A	NCM
	3	23-33	LoSa	10YR5/6	B	NCM
77	1	0-2	rootmat,leaves,humus		A/O	NCM
	2	2-24	LoSa	10YR4/3	A	NCM
	3	24-35	LoSa	10YR5/6	B	NCM
78	1	0-2	rootmat,leaves,humus		A/O	NCM
	2	2-23	LoSa	10YR4/3	A	NCM
	3	23-33	LoSa	10YR5/6	B	NCM
79	1	0-2	rootmat,leaves,humus		A/O	NCM
	2	2-24	LoSa	10YR4/3	A	NCM
	3	24-34	LoSa	10YR5/6	B	NCM
80	1	0-3	rootmat,leaves,humus		A/O	NCM
	2	3-25	LoSa	10YR4/3	A	NCM
	3	25-36	LoSa	10YR5/6	B	NCM
81	1	0-5	rootmat,leaves,humus		A/O	NCM
	2	5-25	LoSa	10YR4/3	A	NCM
	3	25-45	LoSa	10YR5/6	B	NCM
82	1	0-5	rootmat,leaves,humus		A/O	NCM
	2	5-28	LoSa	10YR4/3	A	flake
	3	28-45	LoSa	10YR5/6	B	NCM
82:						
1mN	1	0-5	rootmat,leaves,humus		A/O	NCM
	2	5-25	LoSa	10YR4/3	A	flakes
	3	25-45	LoSa	10YR5/6	B	NCM
3mN	1	0-5	rootmat,leaves,humus		A/O	NCM
	2	5-25	LoSa	10YR4/3	A	flakes
	3	25-35	LoSa	10YR5/6	B	NCM
1mS	1	0-6	rootmat,leaves,humus		A/O	NCM
	2	6-26	LoSa	10YR4/3	A	flakes
	3	26-36	LoSa	10YR5/6	B	NCM
3mS	1	0-6	rootmat,leaves,humus		A/O	NCM
	2	6-25	LoSa	10YR4/3	A	flake
	3	25-35	LoSa	10YR5/6	B	NCM
1mE	1	0-6	rootmat,leaves,humus		A/O	NCM
	2	6-27	LoSa	10YR4/3	A	flakes
	3	27-37	LoSa	10YR5/6	B	NCM
3mE	1	0-5	rootmat,leaves,humus		A/O	NCM
	2	5-26	LoSa	10YR4/3	A	NCM
	3	26-37	LoSa	10YR5/6	B	NCM

1mW	1	0-5	rootmat,leaves,humus		A/O	NCM
	2	5-27	LoSa	10YR4/3	A	NCM
	3	27-38	LoSa	10YR5/6	B	NCM
3mW	1	0-5	rootmat,leaves,humus		A/O	NCM
	2	5-28	LoSa	10YR4/3	A	flakes
	3	28-40	LoSa	10YR5/6	B	NCM
83	1	0-5	rootmat,leaves,humus		A/O	NCM
	2	5-26	LoSa	10YR4/3	A	NCM
	3	26-36	LoSa	10YR5/6	B	NCM
84	1	0-5	rootmat,leaves,humus		A/O	NCM
	2	5-26	LoSa	10YR4/3	A	NCM
	3	26-39	LoSa	10YR5/6	B	NCM
85	1	0-3	rootmat,leaves,humus		A/O	NCM
	2	3-23	LoSa	10YR4/3	A	NCM
	3	23-33	LoSa	10YR5/6	B	NCM
86	1	0-3	rootmat,leaves,humus		A/O	NCM
	2	3-22	LoSa	10YR4/3	A	NCM
	3	22-35	LoSa	10YR5/6	B	NCM
87	1	0-3	rootmat,leaves,humus		A/O	NCM
	2	3-19	LoSa	10YR4/3	A	NCM
	3	19-32	LoSa	10YR5/6	B	NCM
88	1	0-2	rootmat,leaves,humus		A/O	NCM
	2	2-25	LoSa	10YR4/3	A	flake
	3	25-35	LoSa	10YR5/6	B	NCM
88:						
1mN	1	0-3	rootmat,leaves,humus		A/O	NCM
	2	3-25	LoSa	10YR4/3	A	NCM
	3	25-35	LoSa	10YR5/6	B	NCM
3mN	1	0-3	rootmat,leaves,humus		A/O	NCM
	2	3-26	LoSa	10YR4/3	A	NCM
	3	26-37	LoSa	10YR5/6	B	NCM
1mS	1	0-4	rootmat,leaves,humus		A/O	NCM
	2	4-25	LoSa	10YR4/3	A	NCM
	3	25-36	LoSa	10YR5/6	B	NCM
3mS	1	0-4	rootmat,leaves,humus		A/O	NCM
	2	4-24	LoSa	10YR4/3	A	NCM
	3	24-34	LoSa	10YR5/6	B	NCM
1mE	1	0-3	rootmat,leaves,humus		A/O	NCM
	2	3-25	LoSa	10YR4/3	A	NCM
	3	25-35	LoSa	10YR5/6	B	NCM

3mE	1	0-3	rootmat,leaves,humus		A/O	NCM
	2	3-24	LoSa	10YR4/3	A	NCM
	3	24-37	LoSa	10YR5/6	B	NCM
1mW	1	0-6	rootmat,leaves,humus		A/O	NCM
	2	6-27	LoSa	10YR4/3	A	NCM
	3	27-38	LoSa	10YR5/6	B	NCM
3mW	1	0-5	rootmat,leaves,humus		A/O	NCM
	2	5-26	LoSa	10YR4/3	A	NCM
	3	26-38	LoSa	10YR5/6	B	NCM
89	1	0-5	rootmat,leaves,humus		A/O	NCM
	2	5-24	LoSa	10YR4/3	A	NCM
	3	24-34	LoSa	10YR5/6	B	NCM
90	1	0-6	rootmat,leaves,humus		A/O	NCM
	2	6-25	LoSa	10YR4/3	A	NCM
	3	25-35	LoSa	10YR5/6	B	NCM
91	1	0-7	rootmat,leaves,humus		A/O	NCM
	2	7-23	LoSa	10YR4/3	A	NCM
	3	23-33	LoSa	10YR5/6	B	NCM
92	1	0-7	rootmat,leaves,humus		A/O	NCM
	2	7-23	LoSa	10YR4/3	A	NCM
	3	23-33	LoSa	10YR5/6	B	NCM
93	1	0-7	rootmat,leaves,humus		A/O	NCM
	2	7-23	LoSa	10YR4/3	A	NCM
	3	23-36	LoSa	10YR5/6	B	NCM
94	1	0-7	rootmat,leaves,humus		A/O	NCM
	2	7-22	LoSa	10YR4/3	A	NCM
	3	22-35	LoSa	10YR5/6	B	NCM
95	1	0-7	rootmat,leaves,humus		A/O	NCM
	2	7-26	LoSa	10YR4/3	A	NCM
	3	26-36	LoSa	10YR5/6	B	NCM
96	1	0-2	rootmat,leaves,humus		A/O	NCM
	2	2-24	LoSa	10YR4/3	A	NCM
	3	24-35	LoSa	10YR5/6	B	NCM
97	1	0-2	rootmat,leaves,humus		A/O	NCM
	2	2-23	LoSa	10YR4/3	A	NCM
	3	23-35	LoSa	10YR5/6	B	NCM
98	1	0-2	rootmat,leaves,humus		A/O	NCM
	2	2-20	LoSa	10YR4/3	A	NCM
	3	20-30	LoSa	10YR5/6	B	NCM

99	1	0-2	rootmat,leaves,humus		A/O	NCM
	2	2-26	LoSa	10YR4/3	A	flake
	3	26-36	LoSa	10YR5/6	B	NCM
99:						
1mN	1	0-2	rootmat,leaves,humus		A/O	NCM
	2	2-25	LoSa	10YR4/3	A	NCM
	3	25-36	LoSa	10YR5/6	B	NCM
3mN	1	0-2	rootmat,leaves,humus		A/O	NCM
	2	2-25	LoSa	10YR4/3	A	NCM
	3	25-36	LoSa	10YR5/6	B	NCM
1mS	1	0-2	rootmat,leaves,humus		A/O	NCM
	2	2-24	LoSa	10YR4/3	A	NCM
	3	24-36	LoSa	10YR5/6	B	NCM
3mS	1	0-2	rootmat,leaves,humus		A/O	NCM
	2	2-26	LoSa	10YR4/3	A	NCM
	3	26-36	LoSa	10YR5/6	B	NCM
1mE	1	0-2	rootmat,leaves,humus		A/O	NCM
	2	2-24	LoSa	10YR4/3	A	NCM
	3	24-36	LoSa	10YR5/6	B	NCM
3mE	1	0-2	rootmat,leaves,humus		A/O	NCM
	2	2-25	LoSa	10YR4/3	A	NCM
	3	25-35	LoSa	10YR5/6	B	NCM
1mW	1	0-2	rootmat,leaves,humus		A/O	NCM
	2	2-27	LoSa	10YR4/3	A	NCM
	3	27-37	LoSa	10YR5/6	B	NCM
3mW	1	0-2	rootmat,leaves,humus		A/O	NCM
	2	2-27	LoSa	10YR4/3	A	NCM
	3	27-38	LoSa	10YR5/6	B	NCM
100	1	0-2	rootmat,leaves,humus		A/O	NCM
	2	2-20	LoSa	10YR4/3	A	NCM
	3	20-30	LoSa	10YR5/6	B	NCM
101	1	0-2	rootmat,leaves,humus		A/O	NCM
	2	2-21	LoSa	10YR4/3	A	NCM
	3	21-31	LoSa	10YR5/6	B	NCM
102	1	0-2	rootmat,leaves,humus		A/O	NCM
	2	2-21	LoSa	10YR4/3	A	NCM
	3	21-32	LoSa	10YR5/6	B	NCM
103	1	0-2	rootmat,leaves,humus		A/O	NCM
	2	2-20	LoSa	10YR4/3	A	NCM
	3	20-35	LoSa	10YR5/6	B	NCM

104	1	0-2	rootmat,leaves,humus		A/O	NCM
	2	2-21	LoSa	10YR4/3	A	NCM
	3	22-33	LoSa	10YR5/6	B	NCM
105	1	0-2	rootmat,leaves,humus		A/O	NCM
	2	2-23	LoSa	10YR4/3	A	NCM
	3	23-33	LoSa	10YR5/6	B	NCM
106	1	0-2	rootmat,leaves,humus		A/O	NCM
	2	2-23	LoSa	10YR4/3	A	NCM
	3	23-35	LoSa	10YR5/6	B	NCM
107	1	0-2	rootmat,leaves,humus		A/O	NCM
	2	2-20	LoSa	10YR4/3	A	NCM
	3	20-33	LoSa	10YR5/6	B	NCM
108	1	0-2	rootmat,leaves,humus		A/O	NCM
	2	2-20	LoSa	10YR4/3	A	flake
	3	20-30	LoSa	10YR5/6	B	NCM
108: 1mN	1	0-2	rootmat,leaves,humus		A/O	NCM
	2	2-22	LoSa	10YR4/3	A	NCM
	3	22-33	LoSa	10YR5/6	B	NCM
3mN	1	0-2	rootmat,leaves,humus		A/O	NCM
	2	2-23	LoSa	10YR4/3	A	NCM
	3	23-34	LoSa	10YR5/6	B	NCM
1mS	1	0-2	rootmat,leaves,humus		A/O	NCM
	2	2-21	LoSa	10YR4/3	A	NCM
	3	21-33	LoSa	10YR5/6	B	NCM
3mS	1	0-2	rootmat,leaves,humus		A/O	NCM
	2	2-20	LoSa	10YR4/3	A	NCM
	3	20-34	LoSa	10YR5/6	B	NCM
1mE	1	0-3	rootmat,leaves,humus		A/O	NCM
	2	3-20	LoSa	10YR4/3	A	NCM
	3	20-35	LoSa	10YR5/6	B	NCM
3mE	1	0-2	rootmat,leaves,humus		A/O	NCM
	2	2-22	LoSa	10YR4/3	A	NCM
	3	22-35	LoSa	10YR5/6	B	NCM
1mW	1	0-5	rootmat,leaves,humus		A/O	NCM
	2	5-27	LoSa	10YR4/3	A	NCM
	3	27-38	LoSa	10YR5/6	B	NCM
3mW	1	0-2	rootmat,leaves,humus		A/O	NCM
	2	2-17	LoSa	10YR4/3	A	NCM
	3	17-30	LoSa	10YR5/6	B	NCM

109	1	0-2	rootmat,leaves,humus		A/O	NCM
	2	2-15	LoSa	10YR4/3	A	NCM
	3	15-25	LoSa	10YR5/6	B	NCM
110	1	0-5	rootmat,leaves,humus		A/O	NCM
	2	5-20	LoSa	10YR4/3	A	NCM
	3	20-30	LoSa	10YR5/6	B	NCM
111	1	0-3	rootmat,leaves,humus		A/O	NCM
	2	3-21	LoSa	10YR4/3	A	NCM
	3	21-32	LoSa	10YR5/6	B	NCM
112	1	0-3	rootmat,leaves,humus		A/O	NCM
	2	3-24	LoSa	10YR4/3	A	NCM
	3	24-38	LoSa	10YR5/6	B	NCM
113	1	0-4	rootmat,leaves,humus		A/O	NCM
	2	4-23	LoSa	10YR4/3	A	NCM
	3	23-34	LoSa	10YR5/6	B	NCM
114	1	0-5	rootmat,leaves,humus		A/O	NCM
	2	5-25	LoSa	10YR4/3	A	NCM
	3	25-38	LoSa	10YR5/6	B	NCM
115	1	0-3	rootmat,leaves,humus		A/O	NCM
	2	3-19	LoSa	10YR4/3	A	NCM
	3	19-39	LoSa	10YR5/6	B	NCM
116	1	0-3	rootmat,leaves,humus		A/O	NCM
	2	3-24	LoSa	10YR4/3	A	flakes
	3	24-38	LoSa	10YR5/6	B	NCM
116: 1mN	1	0-3	rootmat,leaves,humus		A/O	NCM
	2	3-25	LoSa	10YR4/3	A	flakes
	3	25-35	LoSa	10YR5/6	B	NCM
3mN	1	0-2	rootmat,leaves,humus		A/O	NCM
	2	2-25	LoSa	10YR4/3	A	NCM
	3	25-35	LoSa	10YR5/6	B	NCM
1mS	1	0-2	rootmat,leaves,humus		A/O	NCM
	2	2-26	LoSa	10YR4/3	A	NCM
	3	26-36	LoSa	10YR5/6	B	NCM
3mS	1	0-2	rootmat,leaves,humus		A/O	NCM
	2	2-24	LoSa	10YR4/3	A	NCM
	3	24-34	LoSa	10YR5/6	B	NCM
1mE	1	0-2	rootmat,leaves,humus		A/O	NCM
	2	2-25	LoSa	10YR4/3	A	NCM
	3	25-37	LoSa	10YR5/6	B	NCM

3mE	1	0-3	rootmat,leaves,humus		A/O	NCM
	2	3-26	LoSa	10YR4/3	A	flake
	3	26-36	LoSa	10YR5/6	B	NCM
1mW	1	0-3	rootmat,leaves,humus		A/O	NCM
	2	3-26	LoSa	10YR4/3	A	NCM
	3	26-38	LoSa	10YR5/6	B	NCM
3mW	1	0-2	rootmat,leaves,humus		A/O	NCM
	2	2-26	LoSa	10YR4/3	A	NCM
	3	26-38	LoSa	10YR5/6	B	NCM
117	1	0-5	rootmat,leaves,humus		A/O	NCM
	2	5-27	LoSa	10YR4/3	A	NCM
	3	27-39	LoSa	10YR5/6	B	NCM
118	1	0-3	rootmat,leaves,humus		A/O	NCM
	2	3-24	LoSa	10YR4/3	A	NCM
	3	24-38	LoSa	10YR5/6	B	NCM
119	1	0-2	rootmat,leaves,humus		A/O	NCM
	2	2-18	LoSa	10YR4/3	A	NCM
	3	18-39	LoSa	10YR5/6	B	NCM
120	1	0-3	rootmat,leaves,humus		A/O	NCM
	2	3-25	LoSa	10YR4/3	A	NCM
	3	25-35	LoSa	10YR5/6	B	NCM
121	1	0-3	rootmat,leaves,humus		A/O	NCM
	2	3-25	LoSa	10YR4/3	A	NCM
	3	25-35	LoSa	10YR5/6	B	NCM
122	1	0-3	rootmat,leaves,humus		A/O	NCM
	2	3-26	LoSa	10YR4/3	A	NCM
	3	26-37	LoSa	10YR5/6	B	NCM
123	1	0-3	rootmat,leaves,humus		A/O	NCM
	2	3-24	LoSa	10YR4/3	A	NCM
	3	24-38	LoSa	10YR5/6	B	NCM
124	1	0-3	rootmat,leaves,humus		A/O	NCM
	2	3-23	LoSa	10YR4/3	A	NCM
	3	23-33	LoSa	10YR5/6	B	NCM
125	1	0-3	rootmat,leaves,humus		A/O	NCM
	2	3-26	LoSa	10YR4/3	A	NCM
	3	26-37	LoSa	10YR5/6	B	NCM
126	1	0-3	rootmat,leaves,humus		A/O	NCM
	2	3-23	LoSa	10YR4/3	A	NCM
	3	23-35	LoSa	10YR5/6	B	NCM

127	1	0-4	rootmat,leaves,humus		A/O	NCM
	2	4-22	LoSa	10YR4/3	A	NCM
	3	22-33	LoSa	10YR5/6	B	NCM
128	1	0-3	rootmat,leaves,humus		A/O	NCM
	2	3-25	LoSa	10YR4/3	A	NCM
	3	25-40	LoSa	10YR5/6	B	NCM
129	1	0-3	rootmat,leaves,humus		A/O	NCM
	2	3-24	LoSa	10YR4/3	A	NCM
	3	24-40	CiLo	10YR5/6	B	NCM
130	1	0-3	rootmat,leaves,humus		A/O	NCM
	2	3-20	LoSa	10YR4/3	A	NCM
	3	20-30	LoSa	10YR5/6	B	NCM
131	1	0-3	rootmat,leaves,humus		A/O	NCM
	2	3-21	LoSa	10YR4/3	A	NCM
	3	21-31	LoSa	10YR5/6	B	NCM
132	1	0-3	rootmat,leaves,humus		A/O	NCM
	2	3-25	LoSa	10YR4/3	A	NCM
	3	25-38	LoSa	10YR5/6	B	NCM
133	1	0-3	rootmat,leaves,humus		A/O	NCM
	2	5-25	LoSa	10YR4/3	A	flake
	3	25-37	LoSa	10YR5/6	B	NCM
133: 1mN	1	0-2	rootmat,leaves,humus		A/O	NCM
	2	2-25	LoSa	10YR4/3	A	NCM
	3	25-37	LoSa	10YR5/6	B	NCM
3mN	1	0-2	rootmat,leaves,humus		A/O	NCM
	2	2-25	LoSa	10YR4/3	A	NCM
	3	25-35	LoSa	10YR5/6	B	NCM
1mS	1	0-3	rootmat,leaves,humus		A/O	NCM
	2	3-26	LoSa	10YR4/3	A	NCM
	3	26-36	LoSa	10YR5/6	B	NCM
3mS	1	0-3	rootmat,leaves,humus		A/O	NCM
	2	3-24	LoSa	10YR4/3	A	NCM
	3	24-34	LoSa	10YR5/6	B	NCM
1mE	1	0-3	rootmat,leaves,humus		A/O	NCM
	2	3-25	LoSa	10YR4/3	A	NCM
	3	25-35	LoSa	10YR5/6	B	NCM
3mE	1	0-3	rootmat,leaves,humus		A/O	NCM
	2	3-24	LoSa	10YR4/3	A	NCM
	3	24-35	LoSa	10YR5/6	B	NCM

1mW	1	0-2	rootmat,leaves,humus		A/O	NCM
	2	2-27	LoSa	10YR4/3	A	NCM
	3	27-38	LoSa	10YR5/6	B	NCM
3mW	1	0-2	rootmat,leaves,humus		A/O	NCM
	2	2-27	LoSa	10YR4/3	A	NCM
	3	27-40	LoSa	10YR5/6	B	NCM
134	1	0-2	rootmat,leaves,humus		A/O	NCM
	2	2-27	LoSa	10YR4/3	A	NCM
	3	27-40	LoSa	10YR5/6	B	NCM
135	1	0-3	rootmat,leaves,humus		A/O	NCM
	2	3-26	LoSa	10YR4/3	A	NCM
	3	26-36	LoSa	10YR5/6	B	NCM
136	1	0-4	rootmat,leaves,humus		A/O	NCM
	2	4-27	LoSa	10YR4/3	A	NCM
	3	27-38	LoSa	10YR5/6	B	NCM
137	1	0-3	rootmat,leaves,humus		A/O	NCM
	2	3-25	LoSa	10YR4/3	A	NCM
	3	25-35	LoSa	10YR5/6	B	NCM
138	1	0-3	rootmat,leaves,humus		A/O	NCM
	2	3-27	LoSa	10YR4/3	A	NCM
	3	27-40	LoSa	10YR5/6	B	NCM
139	1	0-3	rootmat,leaves,humus		A/O	NCM
	2	5-23	LoSa	10YR4/3	A	scraper
	3	23-36	LoSa	10YR5/6	B	NCM
139: 1mN	1	0-3	rootmat,leaves,humus		A/O	NCM
	2	3-25	LoSa	10YR4/3	A	NCM
	3	25-35	LoSa	10YR5/6	B	NCM
3mN	1	0-3	rootmat,leaves,humus		A/O	NCM
	2	3-23	LoSa	10YR4/3	A	NCM
	3	23-35	LoSa	10YR5/6	B	NCM
1mS	1	0-2	rootmat,leaves,humus		A/O	NCM
	2	2-26	LoSa	10YR4/3	A	NCM
	3	26-37	LoSa	10YR5/6	B	NCM
3mS	1	0-3	rootmat,leaves,humus		A/O	NCM
	2	3-23	LoSa	10YR4/3	A	NCM
	3	23-34	LoSa	10YR5/6	B	NCM
1mE	1	0-3	rootmat,leaves,humus		A/O	NCM
	2	3-25	LoSa	10YR4/3	A	NCM
	3	25-35	LoSa	10YR5/6	B	NCM

3mE	1	0-2	rootmat,leaves,humus		A/O	NCM
	2	2-24	LoSa	10YR4/3	A	NCM
	3	24-35	LoSa	10YR5/6	B	NCM
1mW	1	0-2	rootmat,leaves,humus		A/O	NCM
	2	2-25	LoSa	10YR4/3	A	NCM
	3	25-35	LoSa	10YR5/6	B	NCM
3mW	1	0-3	rootmat,leaves,humus		A/O	NCM
	2	3-23	LoSa	10YR4/3	A	NCM
	3	23-35	LoSa	10YR5/6	B	NCM
140	1	0-3	rootmat,leaves,humus		A/O	NCM
	2	3-25	LoSa	10YR4/3	A	NCM
	3	25-40	LoSa	10YR5/6	B	NCM
141	1	0-3	rootmat,leaves,humus		A/O	NCM
	2	3-26	LoSa	10YR4/3	A	NCM
	3	26-41	LoSa	10YR5/6	B	NCM
142	1	0-3	rootmat,leaves,humus		A/O	NCM
	2	3-25	LoSa	10YR4/3	A	NCM
	3	25-35	LoSa	10YR5/6	B	NCM
143	1	0-3	rootmat,leaves,humus		A/O	NCM
	2	3-27	LoSa	10YR4/3	A	NCM
	3	27-40	LoSa	10YR5/6	B	NCM
144	1	0-2	rootmat,leaves,humus		A/O	NCM
	2	2-25	LoSa	10YR4/3	A	NCM
	3	25-36	LoSa	10YR5/6	B	NCM
145	1	0-3	rootmat,leaves,humus		A/O	NCM
	2	3-23	LoSa	10YR4/3	A	NCM
	3	23-33	LoSa	10YR5/6	B	NCM
146	1	0-2	rootmat,leaves,humus		A/O	NCM
	2	2-25	LoSa	10YR4/3	A	NCM
	3	25-37	LoSa	10YR5/6	B	NCM
147	1	0-3	rootmat,leaves,humus		A/O	NCM
	2	3-23	LoSa	10YR4/3	A	NCM
	3	23-33	LoSa	10YR5/6	B	NCM
148	1	0-2	rootmat,leaves,humus		A/O	NCM
	2	2-28	LoSa	10YR4/3	A	NCM
	3	28-38	LoSa	10YR5/6	B	NCM
149	1	0-2	rootmat,leaves,humus		A/O	NCM
	2	2-22	LoSa	10YR4/3	A	NCM
	3	22-35	LoSa	10YR5/6	B	NCM

150	1	0-3	rootmat,leaves,humus		A/O	NCM
	2	3-24	LoSa	10YR4/3	A	NCM
	3	24-36	LoSa	10YR5/6	B	NCM
151	1	0-2	rootmat,leaves,humus		A/O	NCM
	2	2-26	LoSa	10YR4/3	A	NCM
	3	26-36	LoSa	10YR5/6	B	NCM
152	1	0-2	rootmat,leaves,humus		A/O	NCM
	2	2-25	LoSa	10YR4/3	A	NCM
	3	25-35	LoSa	10YR5/6	B	NCM
153	1	0-2	rootmat,leaves,humus		A/O	NCM
	2	2-27	LoSa	10YR4/3	A	NCM
	3	27-37	LoSa	10YR5/6	B	NCM
154	1	0-2	rootmat,leaves,humus		A/O	NCM
	2	2-24	LoSa	10YR4/3	A	NCM
	3	24-37	LoSa	10YR5/6	B	NCM
155	1	0-3	rootmat,leaves,humus		A/O	NCM
	2	3-28	LoSa	10YR4/3	A	NCM
	3	28-38	LoSa	10YR5/6	B	NCM
156	1	0-2	rootmat,leaves,humus		A/O	NCM
	2	2-30	LoSa	10YR4/3	A	NCM
	3	30-40	LoSa	10YR5/6	B	NCM
157	1	0-2	rootmat,leaves,humus		A/O	NCM
	2	2-24	LoSa	10YR4/3	A	NCM
	3	24-40	LoSa	10YR5/6	B	NCM
158	1	0-3	rootmat,leaves,humus		A/O	NCM
	2	3-20	LoSa	10YR4/3	A	NCM
	3	20-30	LoSa	10YR5/6	B	NCM
159	1	0-3	rootmat,leaves,humus		A/O	NCM
	2	3-24	LoSa	10YR4/3	A	NCM
	3	24-40	LoSa	10YR5/6	B	NCM
160	1	0-4	rootmat,leaves,humus		A/O	NCM
	2	4-22	LoSa	10YR4/3	A	NCM
	3	22-30	LoSa	10YR5/6	B	NCM
161	1	0-3	rootmat,leaves,humus		A/O	NCM
	2	3-29	LoSa	10YR4/3	A	NCM
	3	29-39	LoSa	10YR5/6	B	NCM
162	1	0-3	rootmat,leaves,humus		A/O	NCM
	2	3-25	LoSa	10YR4/3	A	NCM
	3	25-35	LoSa	10YR5/6	B	NCM

163	1	0-2	rootmat,leaves,humus		A/O	NCM
	2	2-25	LoSa	10YR4/3	A	NCM
	3	25-35	LoSa	10YR5/6	B	NCM
164	1	0-3	rootmat,leaves,humus		A/O	NCM
	2	3-25	LoSa	10YR4/3	A	NCM
	3	25-39	LoSa	10YR5/6	B	NCM
165	1	0-2	rootmat,leaves,humus		A/O	NCM
	2	2-24	LoSa	10YR4/3	A	NCM
	3	24-35	LoSa	10YR5/6	B	NCM
166	1	0-4	rootmat,leaves,humus		A/O	NCM
	2	4-23	LoSa	10YR4/3	A	NCM
	3	23-33	LoSa	10YR5/6	B	NCM
167	1	0-3	rootmat,leaves,humus		A/O	NCM
	2	3-23	LoSa	10YR4/3	A	NCM
	3	23-43	LoSa	10YR5/6	B	NCM
168	1	0-3	rootmat,leaves,humus		A/O	NCM
	2	3-23	LoSa	10YR4/3	A	NCM
	3	23-36	LoSa	10YR5/6	B	NCM
169	1	0-3	rootmat,leaves,humus		A/O	NCM
	2	3-23	LoSa	10YR4/3	A	NCM
	3	23-35	LoSa	10YR5/6	B	NCM
170	1	0-2	rootmat,leaves,humus		A/O	NCM
	2	2-24	LoSa	10YR4/3	A	NCM
	3	24-34	LoSa	10YR5/6	B	NCM
171	1	0-2	rootmat,leaves,humus		A/O	NCM
	2	2-26	LoSa	10YR4/3	A	NCM
	3	26-36	LoSa	10YR5/6	B	NCM
172	1	0-2	rootmat,leaves,humus		A/O	NCM
	2	2-23	LoSa	10YR4/3	A	NCM
	3	23-35	LoSa	10YR5/6	B	NCM
173	1	0-2	rootmat,leaves,humus		A/O	NCM
	2	2-25	LoSa	10YR4/3	A	NCM
	3	25-35	LoSa	10YR5/6	B	NCM
174	1	0-2	rootmat,leaves,humus		A/O	NCM
	2	2-23	LoSa	10YR4/3	A	NCM
	3	23-34	LoSa	10YR5/6	B	NCM
175	1	0-2	rootmat,leaves,humus		A/O	NCM
	2	2-24	LoSa	10YR4/3	A	NCM
	3	24-37	LoSa	10YR5/6	B	NCM

176	1	0-2	rootmat,leaves,humus		A/O	NCM
	2	2-23	LoSa	10YR4/3	A	NCM
	3	29-39	LoSa	10YR5/6	B	NCM
177	1	0-2	rootmat,leaves,humus		A/O	NCM
	2	2-24	LoSa	10YR4/3	A	NCM
	3	24-38	LoSa	10YR5/6	B	NCM
178	1	0-2	rootmat,leaves,humus		A/O	NCM
	2	2-23	LoSa	10YR4/3	A	NCM
	3	23-38	LoSa	10YR5/6	B	NCM
179	1	0-3	rootmat,leaves,humus		A/O	NCM
	2	3-23	LoSa	10YR4/3	A	NCM
	3	23-40	LoSa	10YR5/6	B	NCM
180	1	0-2	rootmat,leaves,humus		A/O	NCM
	2	2-24	LoSa	10YR4/3	A	NCM
	3	24-38	LoSa	10YR5/6	B	NCM
181	1	0-2	rootmat,leaves,humus		A/O	NCM
	2	5-25	LoSa	10YR4/3	A	NCM
	3	25-35	LoSa	10YR5/6	B	NCM
182	1	0-3	rootmat,leaves,humus		A/O	NCM
	2	3-23	LoSa	10YR4/3	A	NCM
	3	23-33	LoSa	10YR5/6	B	NCM
183	1	0-7	rootmat,leaves,humus		A/O	NCM
	2	7-29	LoSa	10YR4/3	A	NCM
	3	29-40	LoSa	10YR5/6	B	NCM
184	1	0-6	rootmat,leaves,humus		A/O	NCM
	2	6-27	LoSa	10YR4/3	A	NCM
	3	27-38	LoSa	10YR5/6	B	NCM
185	1	0-3	rootmat,leaves,humus		A/O	NCM
	2	3-21	LoSa	10YR4/3	A	NCM
	3	21-33	LoSa	10YR5/6	B	NCM
186	1	0-3	rootmat,leaves,humus		A/O	NCM
	2	3-24	LoSa	10YR4/3	A	NCM
	3	24-39	LoSa	10YR5/6	B	NCM
187	1	0-2	rootmat,leaves,humus		A/O	NCM
	2	2-23	LoSa	10YR4/3	A	NCM
	3	23-38	LoSa	10YR5/6	B	NCM
188	1	0-2	rootmat,leaves,humus		A/O	NCM
	2	2-25	LoSa	10YR4/3	A	NCM
	3	25-36	LoSa	10YR5/6	B	NCM

189	1	0-3	rootmat,leaves,humus		A/O	NCM
	2	3-25	LoSa	10YR4/3	A	NCM
	3	25-35	LoSa	10YR5/6	B	NCM
190	1	0-2	rootmat,leaves,humus		A/O	NCM
	2	2-24	LoSa	10YR4/3	A	NCM
	3	24-34	LoSa	10YR5/6	B	NCM
191	1	0-2	rootmat,leaves,humus		A/O	NCM
	2	2-24	LoSa	10YR4/3	A	NCM
	3	24-39	LoSa	10YR5/6	B	NCM
192	1	0-2	rootmat,leaves,humus		A/O	NCM
	2	2-22	LoSa	10YR4/3	A	NCM
	3	22-38	LoSa	10YR5/6	B	NCM
193	1	0-3	rootmat,leaves,humus		A/O	NCM
	2	3-23	LoSa	10YR4/3	A	NCM
	3	23-37	LoSa	10YR5/6	B	NCM
194	1	0-2	rootmat,leaves,humus		A/O	NCM
	2	2-22	LoSa	10YR4/3	A	NCM
	3	22-32	LoSa	10YR5/6	B	NCM
195	1	0-2	rootmat,leaves,humus		A/O	NCM
	2	2-21	LoSa	10YR4/3	A	NCM
	3	21-34	LoSa	10YR5/6	B	NCM
196	1	0-2	rootmat,leaves,humus		A/O	NCM
	2	2-23	LoSa	10YR4/3	A	NCM
	3	23-35	LoSa	10YR5/6	B	NCM
197	1	0-2	rootmat,leaves,humus		A/O	NCM
	2	2-23	LoSa	10YR4/3	A	NCM
	3	23-35	LoSa	10YR5/6	B	NCM
198	1	0-3	rootmat,leaves,humus		A/O	NCM
	2	3-21	LoSa	10YR4/3	A	NCM
	3	21-33	LoSa	10YR5/6	B	NCM
199	1	0-3	rootmat,leaves,humus		A/O	NCM
	2	3-22	LoSa	10YR4/3	A	NCM
	3	22-35	LoSa	10YR5/6	B	NCM
200	1	0-3	rootmat,leaves,humus		A/O	NCM
	2	3-21	LoSa	10YR4/3	A	NCM
	3	21-33	LoSa	10YR5/6	B	NCM
201	1	0-2	rootmat,leaves,humus		A/O	NCM
	2	2-22	LoSa	10YR4/3	A	NCM
	3	22-39	LoSa	10YR5/6	B	NCM

202	1	0-2	rootmat,leaves,humus		A/O	NCM
	2	2-22	LoSa	10YR4/3	A	NCM
	3	22-36	LoSa	10YR5/6	B	NCM
203	1	0-3	rootmat,leaves,humus		A/O	NCM
	2	3-23	LoSa	10YR4/3	A	NCM
	3	23-33	LoSa	10YR5/6	B	NCM
204	1	0-5	rootmat,leaves,humus		A/O	NCM
	2	5-25	LoSa	10YR4/3	A	NCM
	3	25-35	LoSa	10YR5/6	B	NCM
205	1	0-5	rootmat,leaves,humus		A/O	NCM
	2	5-25	LoSa	10YR4/3	A	NCM
	3	25-36	LoSa	10YR5/6	B	NCM
206	1	0-3	rootmat,leaves,humus		A/O	NCM
	2	3-24	LoSa	10YR4/3	A	NCM
	3	24-36	LoSa	10YR5/6	B	NCM
207	1	0-3	rootmat,leaves,humus		A/O	NCM
	2	3-28	LoSa	10YR4/3	A	NCM
	3	28-40	LoSa	10YR5/6	B	NCM
208	1	0-2	rootmat,leaves,humus		A/O	NCM
	2	2-23	LoSa	10YR4/3	A	NCM
	3	23-40	LoSa	10YR5/6	B	NCM
209	1	0-3	rootmat,leaves,humus		A/O	NCM
	2	3-23	LoSa	10YR4/3	A	NCM
	3	23-40	LoSa	10YR5/6	B	NCM
210	1	0-2	rootmat,leaves,humus		A/O	NCM
	2	2-26	LoSa	10YR4/3	A	NCM
	3	26-38	LoSa	10YR5/6	B	NCM
211	1	0-5	rootmat,leaves,humus		A/O	NCM
	2	5-26	LoSa	10YR4/3	A	NCM
	3	26-36	LoSa	10YR5/6	B	NCM
212	1	0-6	rootmat,leaves,humus		A/O	NCM
	2	6-17	LoSa	10YR4/3	A	NCM
	3	17-27	LoSa	10YR5/6	B	NCM
213	1	0-6	rootmat,leaves,humus		A/O	NCM
	2	6-16	LoSa	10YR4/3	A	NCM
	3	16-26	LoSa	10YR5/6	B	NCM
214	1	0-4	rootmat,leaves,humus		A/O	NCM
	2	4-19	LoSa	10YR4/3	A	NCM
	3	19-29	LoSa	10YR5/6	B	NCM

215	1	0-5	rootmat,leaves,humus		A/O	NCM
	2	5-15	LoSa	10YR4/3	A	NCM
	3	15-230	LoSa	10YR5/6	B	NCM
216	1	0-5	rootmat,leaves,humus		A/O	NCM
	2	5-15	LoSa	10YR4/3	A	NCM
	3	15-25	LoSa	10YR5/6	B	NCM
217	1	0-4	rootmat,leaves,humus		A/O	NCM
	2	4-20	LoSa	10YR4/3	A	NCM
	3	20-30	LoSa	10YR5/6	B	NCM
218	1	0-3	rootmat,leaves,humus		A/O	NCM
	2	3-16	LoSa	10YR4/3	A	NCM
	3	16-26	LoSa	10YR5/6	B	NCM
219	1	0-3	rootmat,leaves,humus		A/O	NCM
	2	3-14	LoSa	10YR4/3	A	NCM
	3	14-34	LoSa	10YR5/6	B	NCM
220	1	0-4	rootmat,leaves,humus		A/O	NCM
	2	4-14	LoSa	10YR4/3	A	NCM
	3	14-35	LoSa	10YR5/6	B	NCM
221	1	0-3	rootmat,leaves,humus		A/O	NCM
	2	3-15	LoSa	10YR4/3	A	NCM
	3	15-25	LoSa	10YR5/6	B	NCM
222	1	0-1	rootmat,leaves,humus		A/O	NCM
	2	1-15	LoSa	10YR4/3	A	NCM
	3	15-25	LoSa	10YR5/6	B	NCM
223	1	0-2	rootmat,leaves,humus		A/O	NCM
	2	2-15	LoSa	10YR4/3	A	NCM
	3	15-25	LoSa	10YR5/6	B	NCM
224	1	0-2	rootmat,leaves,humus		A/O	NCM
	2	2-20	LoSa	10YR4/3	A	NCM
	3	20-30	LoSa	10YR5/6	B	NCM
225	1	0-3	rootmat,leaves,humus		A/O	NCM
	2	3-20	LoSa	10YR4/3	A	NCM
	3	9-20	LoSa	10YR5/6	B	NCM
226	1	0-2	rootmat,leaves,humus		A/O	NCM
	2	2-13	LoSa	10YR4/3	A	NCM
	3	13-23	LoSa	10YR5/6	B	NCM
227	1	0-3	rootmat,leaves,humus		A/O	NCM
	2	3-13	LoSa	10YR4/3	A	NCM
	3	13-23	LoSa	10YR5/6	B	NCM

228	1	0-2	rootmat,leaves,humus		A/O	NCM
	2	2-16	LoSa	10YR4/3	A	NCM
	3	16- 26	LoSa	10YR5/6	B	NCM
229	1	0-5	rootmat,leaves,humus		A/O	NCM
	2	5-23	LoSa	10YR4/3	A	NCM
	3	23-33	LoSa	10YR5/6	B	NCM
230	1	0-6	rootmat,leaves,humus		A/O	NCM
	2	6-24	LoSa	10YR4/3	A	core
	3	24-35	LoSa	10YR5/6	B	NCM
230: 1mN	1	0-7	rootmat,leaves,humus		A/O	NCM
	2	7-25	LoSa	10YR4/3	A	NCM
	3	25-35	LoSa	10YR5/6	B	NCM
3mN	1	0-7	rootmat,leaves,humus		A/O	NCM
	2	7-25	LoSa	10YR4/3	A	NCM
	3	25-35	LoSa	10YR5/6	B	NCM
1mS	1	0-6	rootmat,leaves,humus		A/O	NCM
	2	6-26	LoSa	10YR4/3	A	NCM
	3	26-36	LoSa	10YR5/6	B	NCM
3mS	1	0-7	rootmat,leaves,humus		A/O	NCM
	2	7-24	LoSa	10YR4/3	A	NCM
	3	24-35	LoSa	10YR5/6	B	NCM
1mE	1	0-6	rootmat,leaves,humus		A/O	NCM
	2	6-25	LoSa	10YR4/3	A	NCM
	3	25-35	LoSa	10YR5/6	B	NCM
3mE	1	0-6	rootmat,leaves,humus		A/O	NCM
	2	6-24	LoSa	10YR4/3	A	NCM
	3	24-35	LoSa	10YR5/6	B	NCM
1mW	1	0-6	rootmat,leaves,humus		A/O	NCM
	2	6-26	LoSa	10YR4/3	A	NCM
	3	26-38	LoSa	10YR5/6	B	NCM
3mW	1	0-5	rootmat,leaves,humus		A/O	NCM
	2	5-27	LoSa	10YR4/3	A	NCM
	3	27-38	LoSa	10YR5/6	B	NCM
231	1	0-6	rootmat,leaves,humus		A/O	NCM
	2	6-27	LoSa	10YR4/3	A	NCM
	3	27-37	LoSa	10YR5/6	B	NCM
232	1	0-7	rootmat,leaves,humus		A/O	NCM
	2	7-24	LoSa	10YR4/3	A	NCM
	3	24-34	LoSa	10YR5/6	B	NCM

233	1	0-7	rootmat,leaves,humus		A/O	NCM
	2	7-27	LoSa	10YR4/3	A	NCM
	3	27-37	LoSa	10YR5/6	B	NCM
234	1	0-3	rootmat,leaves,humus		A/O	NCM
	2	3-15	LoSa	10YR4/3	A	NCM
	3	15-35	LoSa	10YR5/6	B	NCM
235	1	0-6	rootmat,leaves,humus		A/O	NCM
	2	6-24	LoSa	10YR4/3	A	NCM
	3	24-40	LoSa	10YR5/6	B	NCM
236	1	0-8	rootmat,leaves,humus		A/O	NCM
	2	8-25	LoSa	10YR4/3	A	NCM
	3	25-35	LoSa	10YR5/6	B	NCM
237	1	0-7	rootmat,leaves,humus		A/O	NCM
	2	7-27	LoSa	10YR4/3	A	NCM
	3	27-37	LoSa	10YR5/6	B	NCM
238	1	0-2	rootmat,leaves,humus		A/O	NCM
	2	2-19	LoSa	10YR4/3	A	NCM
	3	19-29	LoSa	10YR5/6	B	NCM
239	1	0-3	rootmat,leaves,humus		A/O	NCM
	2	3-16	LoSa	10YR4/3	A	NCM
	3	16-26	LoSa	10YR5/6	B	NCM
240	1	0-3	rootmat,leaves,humus		A/O	NCM
	2	3-18	LoSa	10YR4/3	A	NCM
	3	18-28	LoSa	10YR5/6	B	NCM
241	1	0-3	rootmat,leaves,humus		A/O	NCM
	2	3-21	LoSa	10YR4/3	A	NCM
	3	21-32	LoSa	10YR5/6	B	NCM
242	1	0-2	rootmat,leaves,humus		A/O	NCM
	2	2-25	LoSa	10YR4/3	A	NCM
	3	25-35	LoSa	10YR5/6	B	NCM
243	1	0-2	rootmat,leaves,humus		A/O	NCM
	2	2-13	LoSa	10YR4/3	A	NCM
	3	13-23	LoSa	10YR5/6	B	NCM
244	1	0-2	rootmat,leaves,humus		A/O	NCM
	2	2-18	LoSa	10YR4/3	A	NCM
	3	18-39	LoSa	10YR5/6	B	NCM
245	1	0-2	rootmat,leaves,humus		A/O	NCM
	2	2-15	LoSa	10YR4/3	A	NCM
	3	15-35	LoSa	10YR5/6	B	NCM

246	1	0-3	rootmat,leaves,humus		A/O	NCM
	2	3-19	LoSa	10YR4/3	A	NCM
	3	19-29	LoSa	10YR5/6	B	NCM
247	1	0-3	rootmat,leaves,humus		A/O	NCM
	2	3-22	LoSa	10YR4/3	A	NCM
	3	22-34	LoSa	10YR5/6	B	NCM
248	1	0-2	rootmat,leaves,humus		A/O	NCM
	2	2-25	LoSa	10YR4/3	A	NCM
	3	25-35	LoSa	10YR5/6	B	NCM
249	1	0-2	rootmat,leaves,humus		A/O	NCM
	2	2-17	LoSa	10YR4/3	A	NCM
	3	17-33	LoSa	10YR5/6	B	NCM
250	1	0-11	rootmat,leaves,humus		A/O	NCM
	2	11-13	LoSa	10YR4/3	A	NCM
	3	13-21	LoSa	10YR5/6	B	NCM
251	1	0-3	rootmat,leaves,humus		A/O	NCM
	2	3-11	LoSa	10YR4/3	A	NCM
	3	11-24	LoSa	10YR5/6	B	NCM
252	1	0-2	rootmat,leaves,humus		A/O	NCM
	2	2-13	LoSa	10YR4/3	A	NCM
	3	13-30	LoSa	10YR5/6	B	NCM
253	1	0-5	rootmat,leaves,humus		A/O	NCM
	2	5-23	LoSa	10YR4/3	A	NCM
	3	23-34	LoSa	10YR5/6	B	NCM
254	1	0-7	rootmat,leaves,humus		A/O	NCM
	2	7-21	LoSa	10YR4/3	A	NCM
	3	21-33	LoSa	10YR5/6	B	NCM
255	1	0-5	rootmat,leaves,humus		A/O	NCM
	2	5-25	LoSa	10YR4/3	A	NCM
	3	25-35	LoSa	10YR5/6	B	NCM
256	1	0-6	rootmat,leaves,humus		A/O	NCM
	2	6-23	LoSa	10YR4/3	A	NCM
	3	23-23	LoSa	10YR5/6	B	NCM
257	1	0-7	rootmat,leaves,humus		A/O	NCM
	2	7-29	LoSa	10YR4/3	A	NCM
	3	29-39	LoSa	10YR5/6	B	NCM
258	1	0-3	rootmat,leaves,humus		A/O	NCM
	2	3-21	LoSa	10YR4/3	A	NCM
	3	21-31	LoSa	10YR5/6	B	NCM

259	1	0-2	rootmat,leaves,humus		A/O	NCM
	2	2-22	LoSa	10YR4/3	A	NCM
	3	22-32	LoSa	10YR5/6	B	NCM
260	1	0-2	rootmat,leaves,humus		A/O	NCM
	2	2-21	LoSa	10YR4/3	A	NCM
	3	21-21	LoSa	10YR5/6	B	NCM
261	1	0-5	rootmat,leaves,humus		A/O	NCM
	2	5-20	LoSa	10YR4/3	A	NCM
	3	20-35	LoSa	10YR5/6	B	NCM
262	1	0-4	rootmat,leaves,humus		A/O	NCM
	2	4-23	LoSa	10YR4/3	A	NCM
	3	23-37	LoSa	10YR5/6	B	NCM
263	1	0-4	rootmat,leaves,humus		A/O	NCM
	2	4-20	LoSa	10YR4/3	A	NCM
	3	20-40	LoSa	10YR5/6	B	NCM
264	1	0-4	rootmat,leaves,humus		A/O	NCM
	2	4-25	LoSa	10YR4/3	A	NCM
	3	25-38	LoSa	10YR5/6	B	NCM
265	1	0-3	rootmat,leaves,humus		A/O	NCM
	2	3-26	LoSa	10YR4/3	A	NCM
	3	26-36	LoSa	10YR5/6	B	NCM
266	1	0-2	rootmat,leaves,humus		A/O	NCM
	2	2-18	LoSa	10YR4/3	A	NCM
	3	18-30	LoSa	10YR5/6	B	NCM
267	1	0-2	rootmat,leaves,humus		A/O	NCM
	2	2-21	LoSa	10YR4/3	A	NCM
	3	21-32	LoSa	10YR5/6	B	NCM
268	1	0-2	rootmat,leaves,humus		A/O	NCM
	2	2-18	LoSa	10YR4/3	A	NCM
	3	18-28	LoSa	10YR5/6	B	NCM
269	1	0-2	rootmat,leaves,humus		A/O	NCM
	2	2-21	LoSa	10YR4/3	A	NCM
	3	21-32	LoSa	10YR5/6	B	NCM
270	1	0-2	rootmat,leaves,humus		A/O	NCM
	2	2-21	LoSa	10YR4/3	A	NCM
	3	21-32	LoSa	10YR5/6	B	NCM
271	1	0-2	rootmat,leaves,humus		A/O	NCM
	2	2-21	LoSa	10YR4/3	A	NCM
	3	21-32	LoSa	10YR5/6	B	NCM

272	1	0-2	rootmat,leaves,humus		A/O	NCM
	2	2-12	LoSa	10YR4/3	A	NCM
	3	12-22	LoSa	10YR5/6	B	NCM
273	1	0-3	rootmat,leaves,humus		A/O	NCM
	2	3-10	LoSa	10YR4/3	A	NCM
	3	10-31	LoSa	10YR5/6	B	NCM
274	1	0-2	rootmat,leaves,humus		A/O	NCM
	2	2-23	LoSa	10YR4/3	A	NCM
	3	23-33	LoSa	10YR5/6	B	NCM
275	1	0-3	rootmat,leaves,humus		A/O	NCM
	2	3-22	LoSa	10YR4/3	A	NCM
	3	22-34	LoSa	10YR5/6	B	NCM
276	1	0-2	rootmat,leaves,humus		A/O	NCM
	2	2-16	LoSa	10YR4/3	A	NCM
	3	16-28	LoSa	10YR5/6	B	NCM
277	1	0-5	rootmat,leaves,humus		A/O	NCM
	2	5-11	LoSa	10YR4/3	A	NCM
	3	11-22	LoSa	10YR5/6	B	NCM
278	1	0-3	rootmat,leaves,humus		A/O	NCM
	2	3-13	LoSa	10YR4/3	A	NCM
	3	13-26	LoSa	10YR5/6	B	NCM
279	1	0-3	rootmat,leaves,humus		A/O	NCM
	2	3-22	LoSa	10YR4/3	A	flakes
	3	22-35	LoSa	10YR5/6	B	NCM
279: 1mN	1	0-5	rootmat,leaves,humus		A/O	NCM
	2	5-24	LoSa	10YR4/3	A	flakes
	3	24-35	LoSa	10YR5/6	B	NCM
3mN	1	0-5	rootmat,leaves,humus		A/O	NCM
	2	5-23	LoSa	10YR4/3	A	flakes
	3	23-33	LoSa	10YR5/6	B	NCM
1mS	1	0-4	rootmat,leaves,humus		A/O	NCM
	2	2-22	LoSa	10YR4/3	A	flakes
	3	22-32	LoSa	10YR5/6	B	NCM
3mS	1	0-4	rootmat,leaves,humus		A/O	NCM
	2	4-22	LoSa	10YR4/3	A	flakes, scraper
	3	22-34	LoSa	10YR5/6	B	NCM
1mE	1	0-3	rootmat,leaves,humus		A/O	NCM
	2	3-21	LoSa	10YR4/3	A	flakes
	3	21-33	LoSa	10YR5/6	B	NCM

3mE	1	0-3	rootmat,leaves,humus		A/O	NCM
	2	3-20	LoSa	10YR4/3	A	flakes
	3	20-35	LoSa	10YR5/6	B	NCM
1mW	1	0-5	rootmat,leaves,humus		A/O	NCM
	2	5-20	LoSa	10YR4/3	A	flakes
	3	20-35	LoSa	10YR5/6	B	NCM
3mW	1	0-5	rootmat,leaves,humus		A/O	NCM
	2	5-20	LoSa	10YR4/3	A	flakes
	3	20-30	LoSa	10YR5/6	B	NCM
280	1	0-3	rootmat,leaves,humus		A/O	NCM
	2	3-19	LoSa	10YR4/3	A	NCM
	3	19-32	LoSa	10YR5/6	B	NCM
281	1	0-3	rootmat,leaves,humus		A/O	NCM
	2	3-31	LoSa	10YR4/3	A	NCM
	3	31-42	LoSa	10YR5/6	B	NCM
282	1	0-3	rootmat,leaves,humus		A/O	NCM
	2	3-25	LoSa	10YR4/3	A	NCM
	3	25-35	LoSa	10YR5/6	B	NCM
283	1	0-5	rootmat,leaves,humus		A/O	NCM
	2	5-29	LoSa	10YR4/3	A	NCM
	3	29-42	LoSa	10YR5/6	B	NCM
284	1	0-5	rootmat,leaves,humus		A/O	NCM
	2	5-20	LoSa	10YR4/3	A	NCM
	3	20-33	LoSa	10YR5/6	B	NCM
285	1	0-1	rootmat,leaves,humus		A/O	NCM
	2	1-28	LoSa	10YR4/3	A	NCM
	3	28-40	LoSa	10YR5/6	B	NCM
286	1	0-1	rootmat,leaves,humus		A/O	NCM
	2	1-20	LoSa	10YR4/3	A	NCM
	3	20-30	LoSa	10YR5/6	B	NCM
287	1	0-3	rootmat,leaves,humus		A/O	NCM
	2	3-19	LoSa	10YR4/3	A	NCM
	3	19-29	LoSa	10YR5/6	B	NCM
288	1	0-5	rootmat,leaves,humus		A/O	NCM
	2	5-21	LoSa	10YR4/3	A	NCM
	3	21-33	LoSa	10YR5/6	B	NCM
289	1	0-3	rootmat,leaves,humus		A/O	NCM
	2	3-25	LoSa	10YR4/3	A	NCM
	3	25-38	LoSa	10YR5/6	B	NCM

290	1	0-5	rootmat,leaves,humus		A/O	NCM
	2	25-28	LoSa	10YR4/3	A	NCM
	3	28-2	LoSa	10YR5/6	B	NCM
291	1	0-2	rootmat,leaves,humus		A/O	NCM
	2	2-25	LoSa	10YR4/3	A	NCM
	3	25-316	LoSa	10YR5/6	B	NCM
292	1	0-2	rootmat,leaves,humus		A/O	NCM
	2	2-27	LoSa	10YR4/3	A	mod botgls
	3	27-41	LoSa	10YR5/6	B	NCM
293	1	0-4	rootmat,leaves,humus		A/O	NCM
	2	4-19	LoSa	10YR4/3	A	NCM
	3	19-30	LoSa	10YR5/6	B	NCM
294	1	0-3	rootmat,leaves,humus		A/O	NCM
	2	3-32	LoSa	10YR4/3	A	NCM
	3	32-42	LoSa	10YR5/6	B	NCM
295	1	0-3	rootmat,leaves,humus		A/O	NCM
	2	3-19	LoSa	10YR4/3	A	NCM
	3	19-35	LoSa	10YR5/6	B	NCM
296	1	0-2	rootmat,leaves,humus		A/O	NCM
	2	2-26	LoSa	10YR4/3	A	NCM
	3	26-39	LoSa	10YR5/6	B	NCM
297	1	0-1	rootmat,leaves,humus		A/O	NCM
	2	1-29	LoSa	10YR4/3	A	NCM
	3	29-39	LoSa	10YR5/6	B	NCM
298	1	0-2	rootmat,leaves,humus		A/O	NCM
	2	2-20	LoSa	10YR4/3	A	NCM
	3	20-33	LoSa	10YR5/6	B	NCM
299	1	0-1	rootmat,leaves,humus		A/O	NCM
	2	1-24	LoSa	10YR4/3	A	NCM
	3	24-34	LoSa	10YR5/6	B	NCM
300	1	0-5	rootmat,leaves,humus		A/O	NCM
	2	5-30	LoSa	10YR4/3	A	windgls
	3	30-43	LoSa	10YR5/6	B	NCM
301	1	0-3	rootmat,leaves,humus		A/O	NCM
	2	3-27	LoSa	10YR4/3	A	NCM
	3	27-45	LoSa	10YR5/6	B	NCM
302	1	0-3	rootmat,leaves,humus		A/O	NCM
	2	3-23	LoSa	10YR4/3	A	NCM
	3	23-33	LoSa	10YR5/6	B	NCM

303	1	0-3	rootmat,leaves,humus		A/O	NCM
	2	3-22	LoSa	10YR4/3	A	NCM
	3	22-35	LoSa	10YR5/6	B	NCM
304	1	0-3	rootmat,leaves,humus		A/O	NCM
	2	3-18	LoSa	10YR4/3	A	NCM
	3	18-29	LoSa	10YR5/6	B	NCM
305	1	0-4	rootmat,leaves,humus		A/O	NCM
	2	4-30	LoSa	10YR4/3	A	NCM
	3	30-41	LoSa	10YR5/6	B	NCM
306	1	0-5	rootmat,leaves,humus		A/O	NCM
	2	5-18	LoSa	10YR4/3	A	NCM
	3	18-31	LoSa	10YR5/6	B	NCM
307	1	0-5	rootmat,leaves,humus		A/O	NCM
	2	5-23	LoSa	10YR4/3	A	NCM
	3	23-38	LoSa	10YR5/6	B	NCM
308	1	0-1	rootmat,leaves,humus		A/O	NCM
	2	1-20	LoSa	10YR4/3	A	NCM
	3	20-32	LoSa	10YR5/6	B	NCM
309	1	0-1	rootmat,leaves,humus		A/O	NCM
	2	1-29	LoSa	10YR4/3	A	NCM
	3	29-40	LoSa	10YR5/6	B	NCM
310	1	0-4	rootmat,leaves,humus		A/O	NCM
	2	4-23	LoSa	10YR4/3	A	NCM
	3	23-32	LoSa	10YR5/6	B	NCM
311	1	0-3	rootmat,leaves,humus		A/O	NCM
	2	3-22	LoSa	10YR4/3	A	NCM
	3	22-38	LoSa	10YR5/6	B	NCM
312	1	0-2	rootmat,leaves,humus		A/O	NCM
	2	2-20	LoSa	10YR4/3	A	NCM
	3	20-31	LoSa	10YR5/6	B	NCM
313	1	0-3	rootmat,leaves,humus		A/O	NCM
	2	3-24	LoSa	10YR4/3	A	NCM
	3	24-37	LoSa	10YR5/6	B	NCM
314	1	0-5	rootmat,leaves,humus		A/O	NCM
	2	5-23	LoSa	10YR4/3	A	NCM
	3	23-33	LoSa	10YR5/6	B	NCM
315	1	0-3	rootmat,leaves,humus		A/O	NCM
	2	3-19	LoSa	10YR4/3	A	NCM
	3	19-40	LoSa	10YR5/6	B	NCM

316	1	0-3	rootmat,leaves,humus		A/O	NCM
	2	3-24	LoSa	10YR4/3	A	plastic wrapper
	3	24-38	LoSa	10YR5/6	B	NCM
317	1	0-3	rootmat,leavees,humus		A/O	NCM
	2	3-19	LoSa	10YR4/3	A	NCM
	3	19-30	LoSa	10YR5/6	B	NCM
318	1	0-3	rootmat,leaves,humus		A/O	NCM
	2	3-23	LoSa	10YR4/3	A	NCM
	3	23-33	LoSa	10YR5/6	B	NCM
319	1	0-3	rootmat,leaves,humus		A/O	NCM
	2	3-32	LoSa	10YR4/3	A	NCM
	3	32-45	LoSa	10YR5/6	B	NCM
320	1	0-5	rootmat,leaves,humus		A/O	NCM
	2	5-22	LoSa	10YR4/3	A	NCM
	3	22-36	LoSa	10YR5/6	B	NCM
321	1	0-3	rootmat,leaves,humus		A/O	NCM
	2	3-25	LoSa	10YR4/3	A	NCM
	3	25-38	LoSa	10YR5/6	B	NCM
322	1	0-1	rootmat,leaves,humus		A/O	NCM
	2	1-19	LoSa	10YR4/3	A	NCM
	3	19-31	LoSa	10YR5/6	B	NCM
323	1	0-1	rootmat,leaves,humus		A/O	NCM
	2	1-27	LoSa	10YR4/3	A	NCM
	3	27-37	LoSa	10YR5/6	B	NCM
324	1	0-1	rootmat,leaves,humus		A/O	NCM
	2	1-22	LoSa	10YR4/3	A	NCM
	3	22-35	LoSa	10YR5/6	B	NCM
325	1	0-3	rootmat,leaves,humus		A/O	NCM
	2	3-23	LoSa	10YR4/3	A	NCM
	3	23-35	LoSa	10YR5/6	B	NCM
326	1	0-4	rootmat,leaves,humus		A/O	NCM
	2	4-28	LoSa	10YR4/3	A	NCM
	3	28-41	LoSa	10YR5/6	B	NCM
327	1	0-3	rootmat,leaves,humus		A/O	NCM
	2	3-21	LoSa	10YR4/3	A	NCM
	3	21-35	LoSa	10YR5/6	B	NCM
328	1	0-4	rootmat,leaves,humus		A/O	NCM
	2	4-23	LoSa	10YR4/3	A	NCM
	3	23-35	LoSa	10YR5/6	B	NCM

329	1	0-1	rootmat,leaves,humus		A/O	NCM
	2	1-22	LoSa	10YR4/3	A	NCM
	3	22-33	LoSa	10YR5/6	B	NCM
330	1	0-3	rootmat,leaves,humus		A/O	NCM
	2	3-19	LoSa	10YR4/3	A	NCM
	3	19-38	LoSa	10YR5/6	B	NCM
331	1	0-2	rootmat,leaves,humus		A/O	NCM
	2	2-19	LoSa	10YR4/3	A	NCM
	3	19-31	LoSa	10YR5/6	B	NCM
332	1	0-1	rootmat,leaves,humus		A/O	NCM
	2	1-21	LoSa	10YR4/3	A	NCM
	3	21-31	LoSa	10YR5/6	B	NCM
333	1	0-1	rootmat,leaves,humus		A/O	NCM
	2	1-21	LoSa	10YR4/3	A	NCM
	3	21-31	LoSa	10YR5/6	B	NCM
334	1	0-1	rootmat,leaves,humus		A/O	NCM
	2	1-22	LoSa	10YR4/3	A	NCM
	3	22-35	LoSa	10YR5/6	B	NCM
335	1	0-5	rootmat,leaves,humus		A/O	NCM
	2	5-23	LoSa	10YR4/3	A	NCM
	3	23-33	LoSa	10YR5/6	B	NCM
336	1	0-5	rootmat,leaves,humus		A/O	NCM
	2	5-24	LoSa	10YR4/3	A	flake
	3	14-35	LoSa	10YR5/6	B	NCM
336: 1mN	1	0-5	rootmat,leaves,humus		A/O	NCM
	2	5-25	LoSa	10YR4/3	A	NCM
	3	25-35	LoSa	10YR5/6	B	NCM
3mN	1	0-5	rootmat,leaves,humus		A/O	NCM
	2	5-25	LoSa	10YR4/3	A	NCM
	3	25-35	LoSa	10YR5/6	B	NCM
1mS	1	0-4	rootmat,leaves,humus		A/O	NCM
	2	4-26	LoSa	10YR4/3	A	NCM
	3	26-36	LoSa	10YR5/6	B	NCM
3mS	1	0-4	rootmat,leaves,humus		A/O	NCM
	2	4-24	LoSa	10YR4/3	A	NCM
	3	24-34	LoSa	10YR5/6	B	NCM
1mE	1	0-3	rootmat,leaves,humus		A/O	NCM
	2	3-25	LoSa	10YR4/3	A	NCM
	3	25-35	LoSa	10YR5/6	B	NCM

3mE	1	0-3	rootmat,leaves,humus		A/O	NCM
	2	3-24	LoSa	10YR4/3	A	NCM
	3	24-35	LoSa	10YR5/6	B	NCM
1mW	1	0-5	rootmat,leaves,humus		A/O	NCM
	2	5-25	LoSa	10YR4/3	A	NCM
	3	25-38	LoSa	10YR5/6	B	NCM
3mW	1	0-5	rootmat,leaves,humus		A/O	NCM
	2	5-24	LoSa	10YR4/3	A	NCM
	3	24-35	LoSa	10YR5/6	B	NCM
337	1	0-3	rootmat,leaves,humus		A/O	NCM
	2	3-22	LoSa	10YR4/3	A	NCM
	3	22-38	LoSa	10YR5/6	B	NCM
338	1	0-5	rootmat,leaves,humus		A/O	NCM
	2	5-33	LoSa	10YR4/3	A	NCM
	3	33-43	LoSa	10YR5/6	B	NCM
339	1	0-5	rootmat,leaves,humus		A/O	NCM
	2	5-27	LoSa	10YR4/3	A	NCM
	3	27-38	LoSa	10YR5/6	B	NCM
340	1	0-2	rootmat,leaves,humus		A/O	NCM
	2	2-29	LoSa	10YR4/3	A	NCM
	3	29-40	LoSa	10YR5/6	B	NCM
341	1	0-4	rootmat,leaves,humus		A/O	NCM
	2	4-26	LoSa	10YR4/3	A	NCM
	3	26-36	LoSa	10YR5/6	B	NCM
342	1	0-3	rootmat,leaves,humus		A/O	NCM
	2	3-33	LoSa	10YR4/3	A	NCM
	3	33-43	LoSa	10YR5/6	B	NCM
343	1	0-3	rootmat,leaves,humus		A/O	NCM
	2	3-30	LoSa	10YR4/3	A	NCM
	3	30-43	LoSa	10YR5/6	B	NCM
344	1	0-4	rootmat,leaves,humus		A/O	NCM
	2	4-28	LoSa	10YR4/3	A	NCM
	3	28-42	LoSa	10YR5/6	B	NCM
345	1	0-3	rootmat,leaves,humus		A/O	NCM
	2	3-25	LoSa	10YR4/3	A	NCM
	3	25-45	LoSa	10YR5/6	B	NCM
346	1	0-5	rootmat,leaves,humus		A/O	NCM
	2	5-22	LoSa	10YR4/3	A	NCM
	3	22-35	LoSa	10YR5/6	B	NCM

347	1	0-2	rootmat,leaves,humus		A/O	NCM
	2	2-19	LoSa	10YR4/3	A	NCM
	3	19-31	LoSa	10YR5/6	B	NCM
348	1	0-6	rootmat,leaves,humus		A/O	NCM
	2	6-26	LoSa	10YR4/3	A	NCM
	3	26-43	LoSa	10YR5/6	B	NCM
349	1	0-3	rootmat,leaves,humus		A/O	NCM
	2	3-20	LoSa	10YR4/3	A	modbotglas
	3	20-32	LoSa	10YR5/6	B	NCM
350	1	0-1	rootmat,leaves,humus		A/O	NCM
	2	1-23	LoSa	10YR4/3	A	NCM
	3	23-33	LoSa	10YR5/6	B	NCM
351	1	0-5	rootmat,leaves,humus		A/O	NCM
	2	5-21	LoSa	10YR4/3	A	NCM
	3	21-34	LoSa	10YR5/6	B	NCM
352	1	0-5	rootmat,leaves,humus		A/O	NCM
	2	5-20	LoSa	10YR4/3	A	NCM
	3	20-33	LoSa	10YR5/6	B	NCM
353	1	0-5	rootmat,leaves,humus		A/O	NCM
	2	5-22	LoSa	10YR4/3	A	NCM
	3	22-34	LoSa	10YR5/6	B	NCM
354	1	0-4	rootmat,leaves,humus		A/O	NCM
	2	4-21	LoSa	10YR4/3	A	NCM
	3	21-31	LoSa	10YR5/6	B	NCM
355	1	0-5	rootmat,leaves,humus		A/O	NCM
	2	5-18	LoSa	10YR4/3	A	NCM
	3	18-28	LoSa	10YR5/6	B	NCM
356	1	0-3	rootmat,leaves,humus		A/O	NCM
	2	3-26	LoSa	10YR4/3	A	bottgls
	3	26-37	LoSa	10YR5/6	B	NCM
357	1	0-5	rootmat,leaves,humus		A/O	NCM
	2	5-27	LoSa	10YR4/3	A	NCM
	3	27-38	LoSa	10YR5/6	B	NCM
358	1	0-1	rootmat,leaves,humus		A/O	NCM
	2	1-22	LoSa	10YR4/3	A	NCM
	3	22-32	LoSa	10YR5/6	B	NCM
359	1	0-5	rootmat,leaves,humus		A/O	NCM
	2	5-20	LoSa	10YR4/3	A	NCM
	3	20-34	LoSa	10YR5/6	B	NCM

360	1	0-5	rootmat,leaves,humus		A/O	NCM
	2	5-21	LoSa	10YR4/3	A	NCM
	3	21-33	LoSa	10YR5/6	B	NCM
361	1	0-3	rootmat,leaves,humus		A/O	NCM
	2	3-21	LoSa	10YR4/3	A	plastic
	3	21-32	LoSa	10YR5/6	B	NCM
362	1	0-3	rootmat,leaves,humus		A/O	NCM
	2	3-21	LoSa	10YR4/3	A	NCM
	3	21-32	LoSa	10YR5/6	B	NCM
363	1	0-1	rootmat,leaves,humus		A/O	NCM
	2	1-21	LoSa	10YR4/3	A	NCM
	3	21-33	LoSa	10YR5/6	B	NCM
364	1	0-4	rootmat,leaves,humus		A/O	NCM
	2	4-22	LoSa	10YR4/3	A	NCM
	3	22-33	LoSa	10YR5/6	B	NCM
365	1	0-1	rootmat,leaves,humus		A/O	NCM
	2	1-22	LoSa	10YR4/3	A	NCM
	3	22-33	LoSa	10YR5/6	B	NCM
366	1	0-4	rootmat,leaves,humus		A/O	NCM
	2	4-21	LoSa	10YR4/3	A	NCM
	3	21-34	LoSa	10YR5/6	B	NCM
367	1	0-3	rootmat,leaves,humus		A/O	NCM
	2	3-28	LoSa	10YR4/3	A	NCM
	3	28-41	LoSa	10YR5/6	B	NCM
368	1	0-5	rootmat,leaves,humus		A/O	NCM
	2	5-28	LoSa	10YR4/3	A	NCM
	3	28-39	LoSa	10YR5/6	B	NCM
369	1	0-3	rootmat,leaves,humus		A/O	NCM
	2	3-31	LoSa	10YR4/3	A	botgls
	3	31-46	LoSa	10YR5/6	B	NCM
370	1	0-3	rootmat,leaves,humus		A/O	NCM
	2	3-27	LoSa	10YR4/3	A	NCM
	3	27-38	LoSa	10YR5/6	B	NCM
371	1	0-5	rootmat,leaves,humus		A/O	NCM
	2	5-28	LoSa	10YR4/3	A	NCM
	3	28-38	LoSa	10YR5/6	B	NCM
372	1	0-5	rootmat,leaves,humus		A/O	NCM
	2	5-24	LoSa	10YR4/3	A	NCM
	3	24-36	LoSa	10YR5/6	B	NCM

373	1	0-3	rootmat,leaves,humus		A/O	NCM
	2	3-26	LoSa	10YR4/3	A	NCM
	3	26-36	LoSa	10YR5/6	B	NCM
374	1	0-5	rootmat,leaves,humus		A/O	NCM
	2	5-22	LoSa	10YR4/3	A	NCM
	3	22-23	LoSa	10YR5/6	B	NCM
375	1	0-4	rootmat,leaves,humus		A/O	NCM
	2	4-25	LoSa	10YR4/3	A	NCM
	3	25-35	LoSa	10YR5/6	B	NCM
376	1	0-3	rootmat,leaves,humus		A/O	NCM
	2	3-23	LoSa	10YR4/3	A	NCM
	3	23-34	LoSa	10YR5/6	B	NCM
377	1	0-1	rootmat,leaves,humus		A/O	NCM
	2	1-20	LoSa	10YR4/3	A	NCM
	3	20-31	LoSa	10YR5/6	B	NCM
378	1	0-3	rootmat,leaves,humus		A/O	NCM
	2	3-26	LoSa	10YR4/3	A	NCM
	3	26-36	LoSa	10YR5/6	B	NCM
379	1	0-2	rootmat,leaves,humus		A/O	NCM
	2	2-25	LoSa	10YR4/3	A	NCM
	3	25-37	LoSa	10YR5/6	B	NCM
380	1	0-5	rootmat,leaves,humus		A/O	NCM
	2	5-25	LoSa	10YR4/3	A	NCM
	3	25-41	LoSa	10YR5/6	B	NCM
381	1	0-4	rootmat,leaves,humus		A/O	NCM
	2	4-24	LoSa	10YR4/3	A	beer gls
	3	24-45	LoSa	10YR5/6	B	NCM
382	1	0-3	rootmat,leaves,humus		A/O	NCM
	2	3-29	LoSa	10YR4/3	A	NCM
	3	29-40	LoSa	10YR5/6	B	NCM
383	1	0-3	rootmat,leaves,humus		A/O	NCM
	2	3-25	LoSa	10YR4/3	A	NCM
	3	25-37	LoSa	10YR5/6	B	NCM
384	1	0-5	rootmat,leaves,humus		A/O	NCM
	2	5-25	LoSa	10YR4/3	A	NCM
	3	25-35	LoSa	10YR5/6	B	NCM
385	1	0-3	rootmat,leaves,humus		A/O	NCM
	2	3-23	LoSa	10YR4/3	A	NCM
	3	23-34	LoSa	10YR5/6	B	NCM

386	1	0-3	rootmat,leaves,humus		A/O	NCM
	2	3-29	LoSa	10YR4/3	A	NCM
	3	29-40	LoSa	10YR5/6	B	NCM
387	1	0-5	rootmat,leaves,humus		A/O	NCM
	2	5-26	LoSa	10YR4/3	A	NCM
	3	26-36	LoSa	10YR5/6	B	NCM
388	1	0-4	rootmat,leaves,humus		A/O	NCM
	2	4-27	LoSa	10YR4/3	A	NCM
	3	27-41	LoSa	10YR5/6	B	NCM
389	1	0-3	rootmat,leaves,humus		A/O	NCM
	2	3-27	LoSa	10YR4/3	A	NCM
	3	27-48	LoSa	10YR5/6	B	NCM
390	1	0-5	rootmat,leaves,humus		A/O	NCM
	2	5-22	LoSa	10YR4/3	A	NCM
	3	22-32	LoSa	10YR5/6	B	NCM
391	1	0-3	rootmat,leaves,humus		A/O	NCM
	2	3-19	LoSa	10YR4/3	A	NCM
	3	19-29	LoSa	10YR5/6	B	NCM
392	1	0-5	rootmat,leaves,humus		A/O	NCM
	2	5-25	LoSa	10YR4/3	A	NCM
	3	25-35	LoSa	10YR5/6	B	NCM
393	1	0-5	rootmat,leaves,humus		A/O	NCM
	2	5-19	LoSa	10YR4/3	A	NCM
	3	19-29	LoSa	10YR5/6	B	NCM
394	1	0-3	rootmat,leaves,humus		A/O	NCM
	2	3-24	LoSa	10YR4/3	A	NCM
	3	24-34	LoSa	10YR5/6	B	NCM
395	1	0-3	rootmat,leaves,humus		A/O	NCM
	2	3-22	LoSa	10YR4/3	A	NCM
	3	22-41	LoSa	10YR5/6	B	NCM
396	1	0-3	rootmat,leaves,humus		A/O	NCM
	2	3-22	LoSa	10YR4/3	A	NCM
	3	22-32	LoSa	10YR5/6	B	NCM
397	1	0-3	rootmat,leaves,humus		A/O	NCM
	2	3-22	LoSa	10YR4/3	A	NCM
	3	22-32	LoSa	10YR5/6	B	NCM

APPENDIX 3

CAT	SF	ST	TU	LV	ARB	FT	GP	CL	MAT	MOR	DESCRIPTION	CT	WT
1		21					10	3	54	27	primary, br	1	0.50
2		21					10	3	54	27	primary, white	1	0.20
3		21			3mN		10	3	53	28	secondary	1	1.80
4		68					10	3	53	28	secondary, pink	1	0.20
5		82					10	3	54	28	secondary, white	1	0.40
6		82					10	3	54	29	tertiary white	1	0.10
7		82			3mW		10	3	54	27	primary	1	0.40
8		82			3mW		10	3	54	29	tertiary	1	0.20
9		82			1mS		10	3	54	27	primary	1	0.70
10		82			1mS		10	3	54	29	tertiary	10	6.10
11		82			1mN		10	3	54	29	tertiary	4	0.60
12		82			3mN		10	3	54	27	primary	1	6.60
13		82			3mN		10	3	54	29	tertiary	2	0.90
14		82			3mS		10	3	54	28	secondary	1	1.00
15		82			1mE		10	3	54	27	primary	1	0.70
16		82			1mE		10	3	54	29	tertiary	3	1.10
17		88					10	3	54	28	secondary	1	0.20
18		99					10	3	53	27	primary	1	5.90
19		108					10	3	54	29	tertiary	1	2.10
23		116					10	3	54	27	primary	1	28.40
24		116			1mN		10	3	54	29	tertiary	2	1.00
25		116			3mE		10	3	54	29	tertiary	1	0.30
20		133					10	3	54	27	primary	1	1.40
21		139					10	7	54	68	Scraper	1	5.80
22		230					10	3	54	30	Core, grey	1	11.20
26		279					10	3	53	27	primary, clear	1	4.10
27		279					10	3	54	33	shatter/blockie	1	0.80

CAT	SF	ST	TU	LV	ARB	FT	GP	CL	MAT	MOR	DESCRIPTION	CT	WT
28		279					10	3	54	29	tertiary, white	1	0.80
29		279					10	3	54	29	tertiary, pink	1	0.40
30		279			3mN		10	3	53	29	tertiary	2	0.80
31		279			3mW		10	3	53	28	secondary	1	5.70
32		279			3mW		10	7	54	67	Knife/Scraper, cortex striking platform	1	12.70
33		279			1mE		10	3	53	27	primary	2	16.10
34		279			1mE		10	3	53	29	tertiary	1	0.10
35		279			1mN		10	3	53	27	primary	2	9.10
36		279			1mN		10	3	54	29	tertiary	2	0.60
37		279			1mW		10	3	53	27	primary	2	9.50
38		279			1mW		10	3	53	29	tertiary	1	0.10
39		279			1mS		10	3	53	27	primary, white	2	22.40
40		279			1mS		10	3	54	27	primary, grey	2	10.40
41		279			1mS		10	3	53	28	secondary	1	3.80
42		279			1mS		10	4	53	39	Spokeshave	1	12.70
43		279			3mS		10	3	53	27	primary	9	82.20
44		279			3mS		10	3	54	27	primary	5	29.80
45		279			3mS		10	3	54	27	primary, grey	1	12.10
46		279			3mS		10	3	54	27	primary, pink	1	20.60
47		279			3mS		10	3	54	27	primary, mottled black & white	1	6.50
48		279			3mS		10	3	53	28	secondary	4	11.00
49		279			3mS		10	3	54	28	secondary, grey	1	2.30
50		279			3mS		10	3	53	33	shatter/blockie	1	8.90
51		279			3mS		10	3	53	29	tertiary	6	12.60
52		279			3mS		10		53		Shredder on primary flake	1	15.40
53		279			3mE		10	3	53	27	primary, black	1	14.40
54		279			3mE		10	3	54	27	primary, white	2	31.70

CAT	SF	ST	TU	LV	ARB	FT	GP	CL	MAT	MOR	DESCRIPTION	CT	WT
55		279			3mE		10	3	54	27	primary, grey	2	17.60
56		279			3mE		10	3	54	28	secondary	1	2.80
57		336					10	3	53	29	teritary, clear	1	0.30